

FIG. 1 FINAL SELECTOR RACK NOTE 6

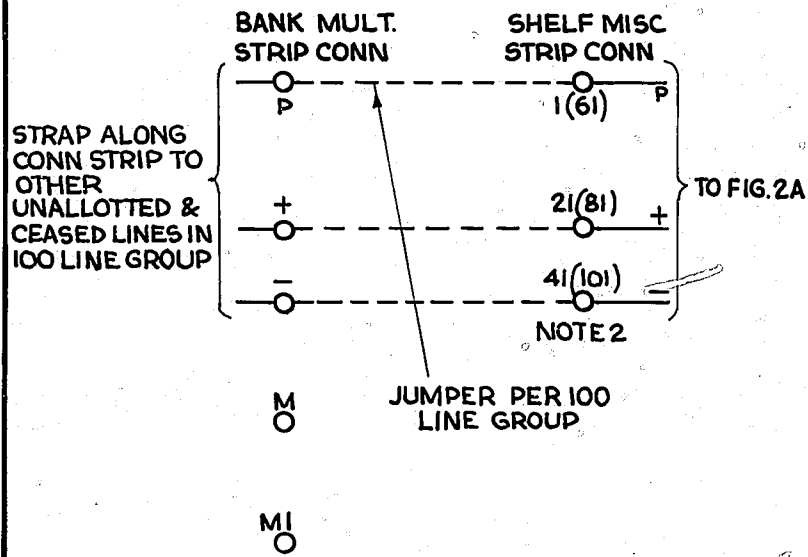


FIG. 2A MAR 1 PER 100 LINE GROUP ORD & 2/10 PBX LINES

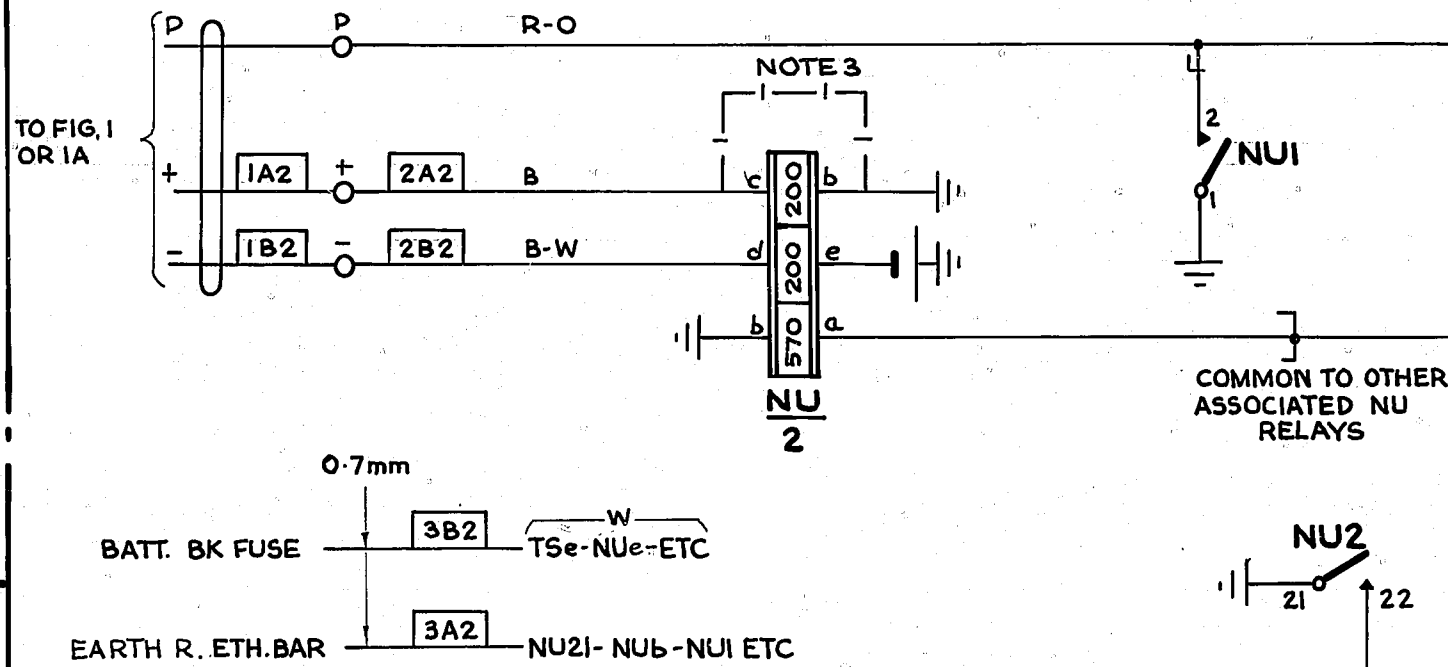


FIG. 2B MAR 1 PER 4 FIGS 2A (400 LINES)

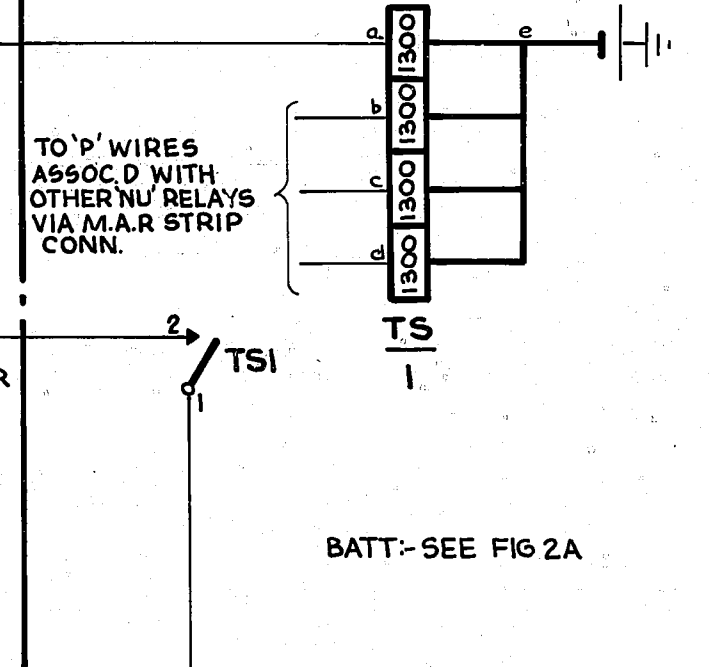


FIG. 1A I.D.F. NOTE 6

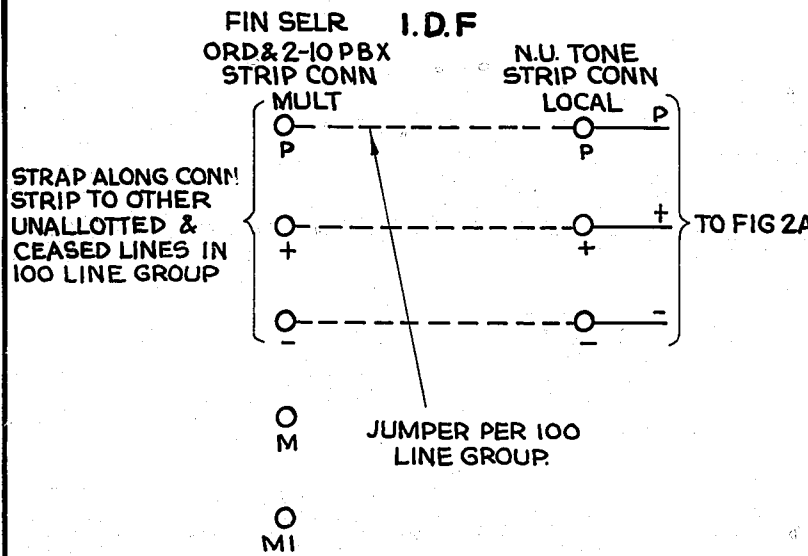


FIG. 4A M FINAL SELECTOR RACK

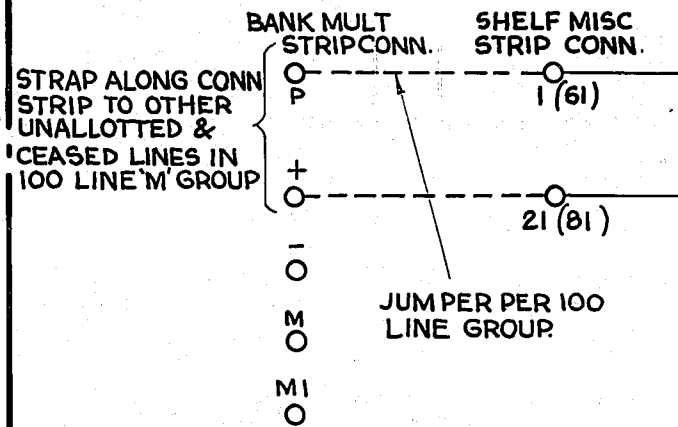
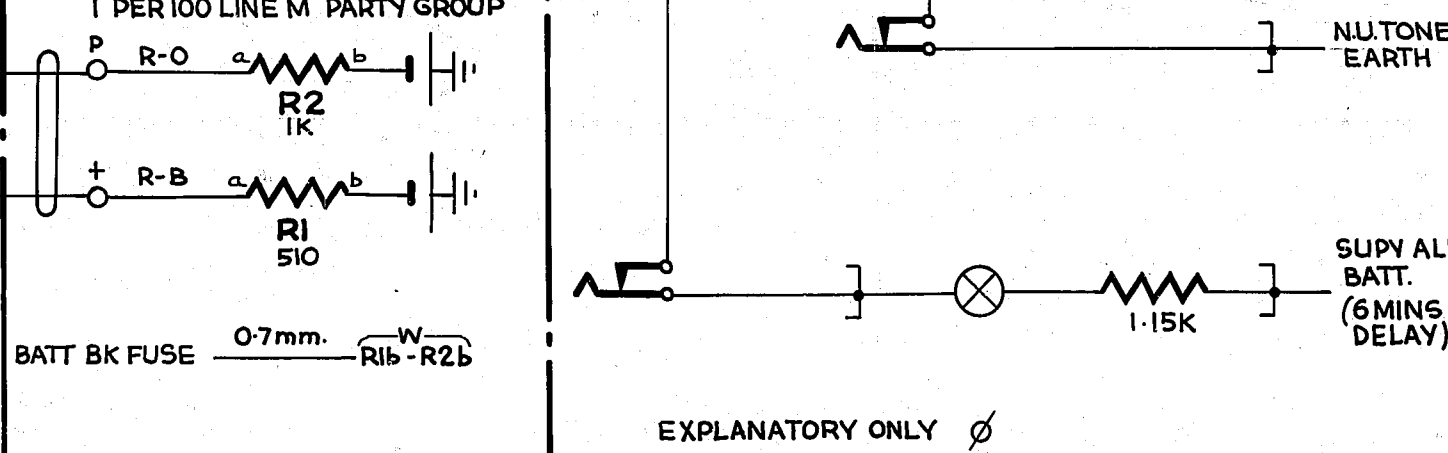


FIG. 4B M.A.R. 1 PER 100 LINE M PARTY GROUP



11 & OVER P.B.X. FINAL SELECTOR LEVELS

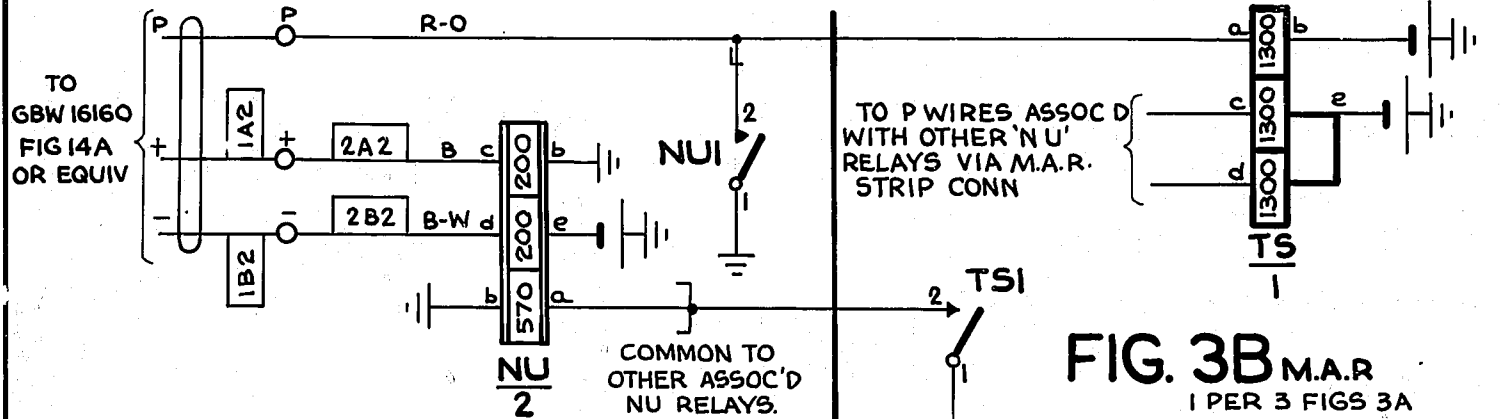
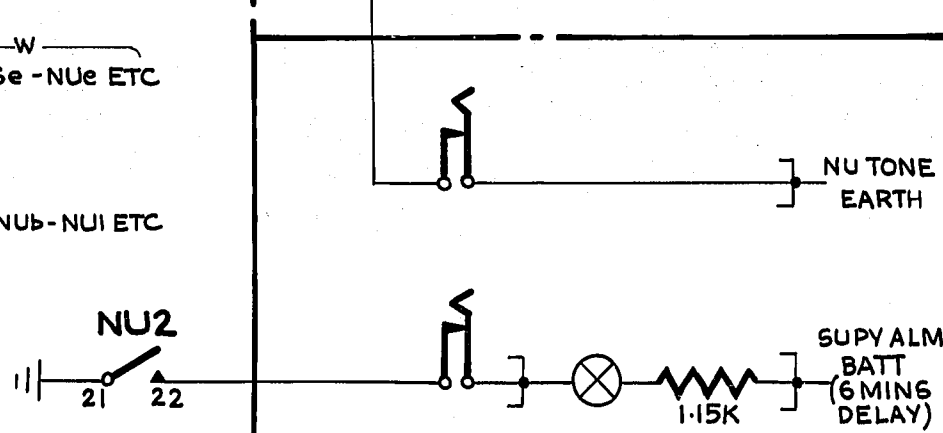


FIG. 3A MAR.

3 PER EXCH

FIG. 3B M.A.R. 1 PER 3 FIGS 3A

BATT :- SEE FIG 3A



NOTES

1. FUSING :- FIGS 2A & 2B 1.5A PER CIRCUIT (1 'TS' & 4 'NU' RELAYS)
FIGS 3A & 3B 1.5A PER CIRCUIT (1 " " 3 " ")
FIG. 4B 1.5A PER CIRCUIT
2. FIGURES IN BRACKETS DENOTE TAG NUMBERS ON 2ND HUNDRED MISC. STRIP CONN.
3. WHEN CIRCUIT IS USED WITH RURAL FINAL SELECTORS ADD STRAP SHOWN — | —
4. ALL WIRING TO BE 0.5mm. UNLESS OTHERWISE SPECIFIED
5. Ø FOR WIRING SEE GBW 10690 OR EQUIV.
6. FIG.1 TO BE SPECIFIED FOR EXCHANGES HAVING DECENTRALISED SUBSCRIBER I.D.F. FACILITIES AT REAR OF FINAL SELECTOR RACKS
FIG.1A TO BE SPECIFIED FOR EXCHANGES HAVING A CENTRALISED SUBSCRIBER I.D.F.
7. EQUIPMENT TO THIS DIAGRAM IS NOT USED IN CONJUNCTION WITH COMPOSITE UNISELECTOR/FINAL SELECTOR RACKS FOR SUCH CASES SEE GBW 16400 OR EQUIV.

				NU TONE UNALLOTTED AND CEASED LINES & LEVELS		
RETRACED AND METRICATED	(157668)	6A	30.6.78	R.E.D.		
REDRAWN FIGS 4A & 4B ADDED	(83626)	6	4.8.67			
AMENDMENT PARTICULARS				ISS	DATE	APP
				SIZE	S	50V E
				GBW 10830		
N.Z.P.O.		DRAWN	CHECKED	WIRING	CIRCUIT	