

FIG. 6
CONTINUOUS RINGING DISTRIBUTION

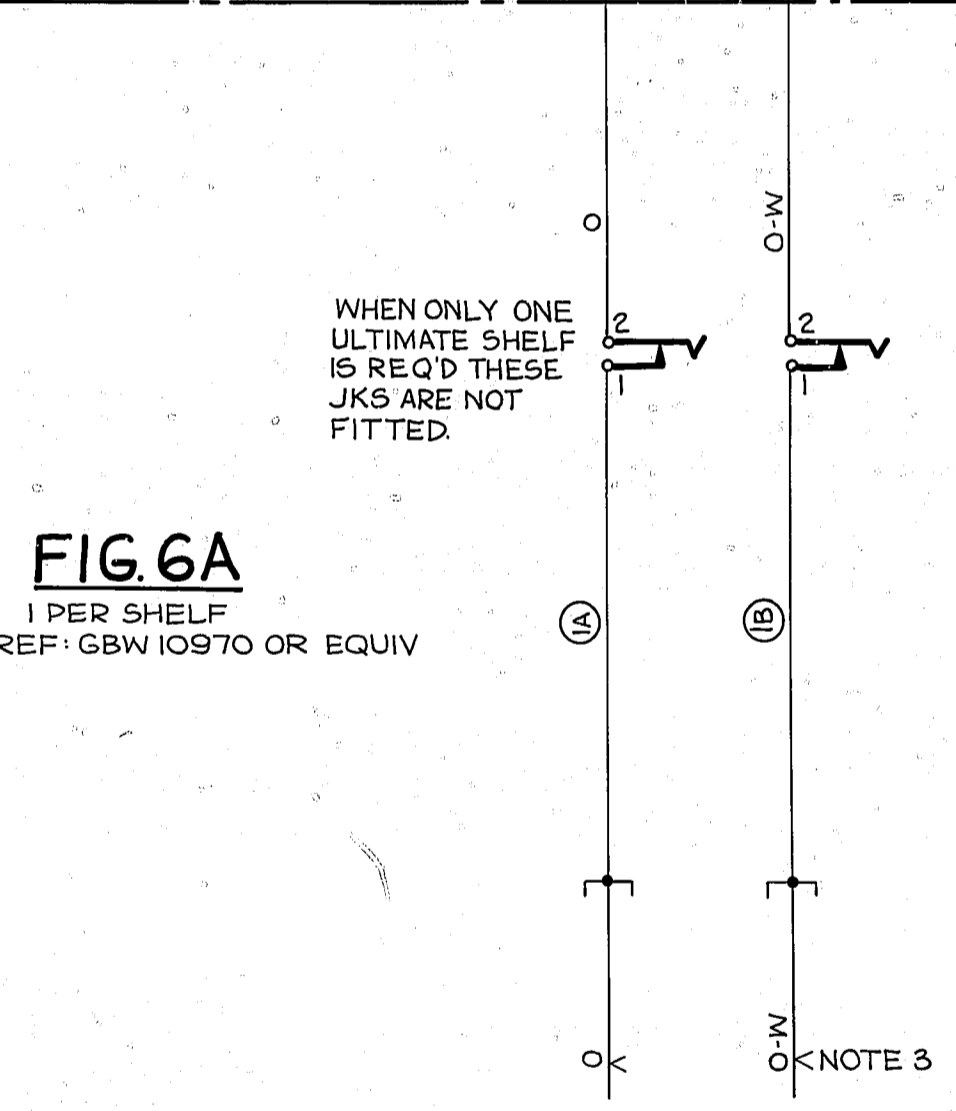
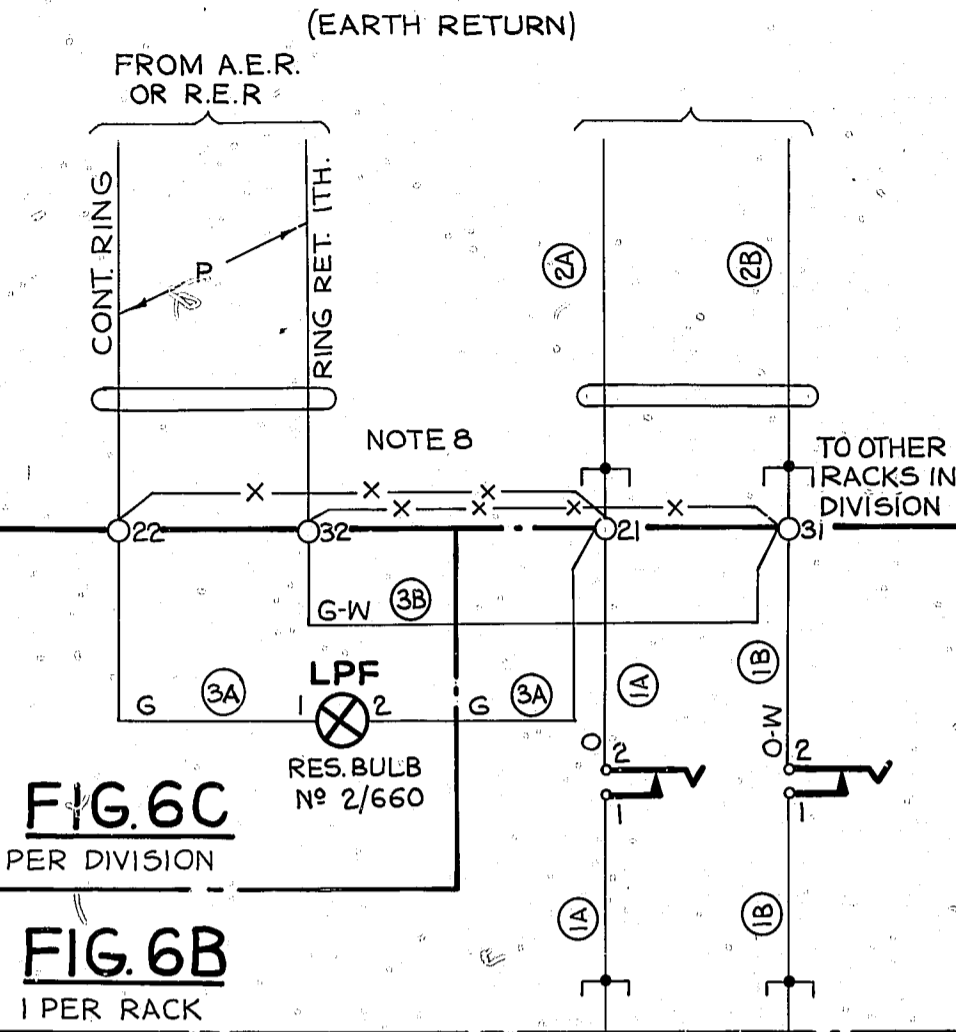


FIG. 7
NU. TONE EARTH DISTRIBUTION



FIG. 7A
1 PER RACK
REF: GBW 10970 OR EQUIV.

FIG. 8
BUSY TONE EARTH DISTRIBUTION

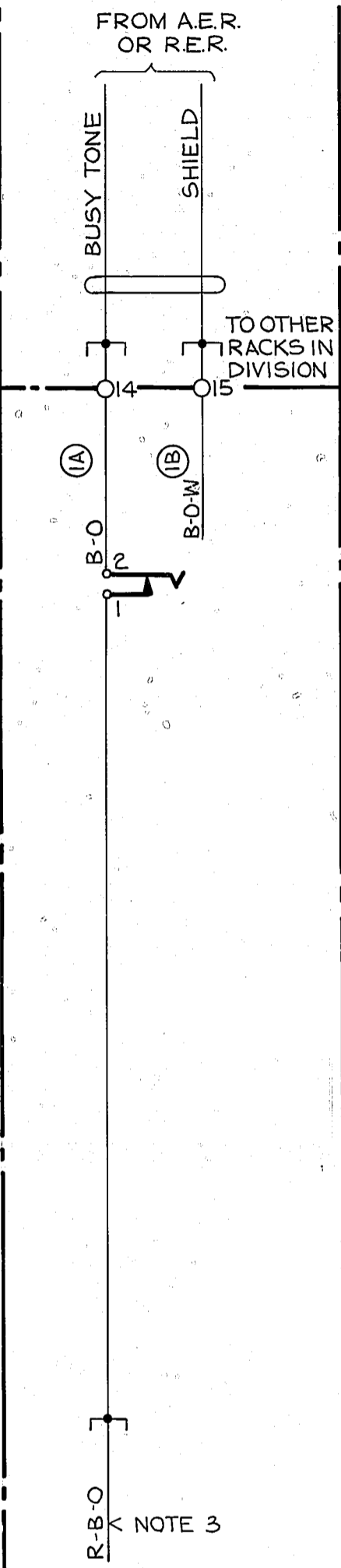


FIG. 8A
1 PER RACK
REF: GBW 10970 OR EQUIV.

FIG. 9
INT. RING TONE ETH DISTRIBUTION

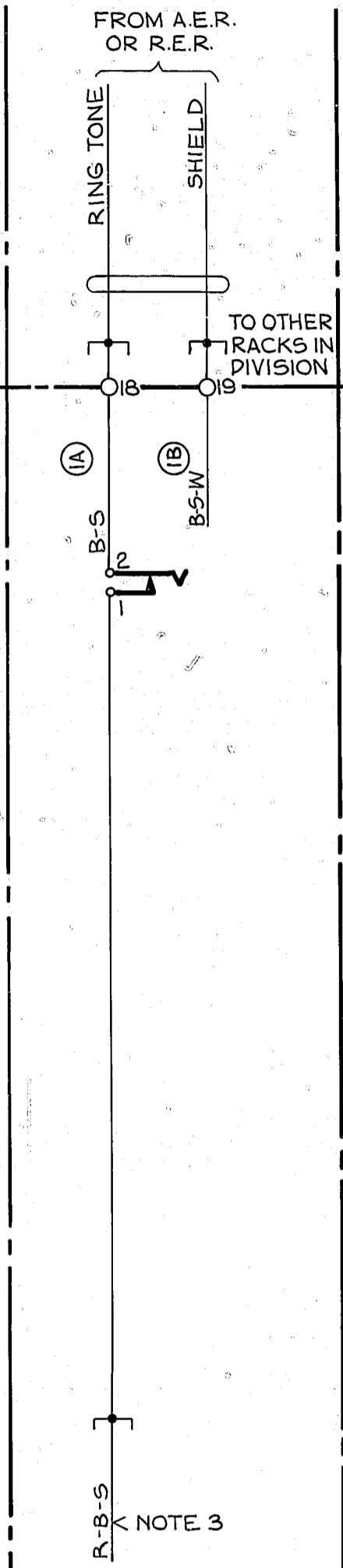


FIG. 9A
1 PER RACK
REF: GBW 10970 OR EQUIV.

FIG. 10
FLICKER EARTH DISTRIBUTION

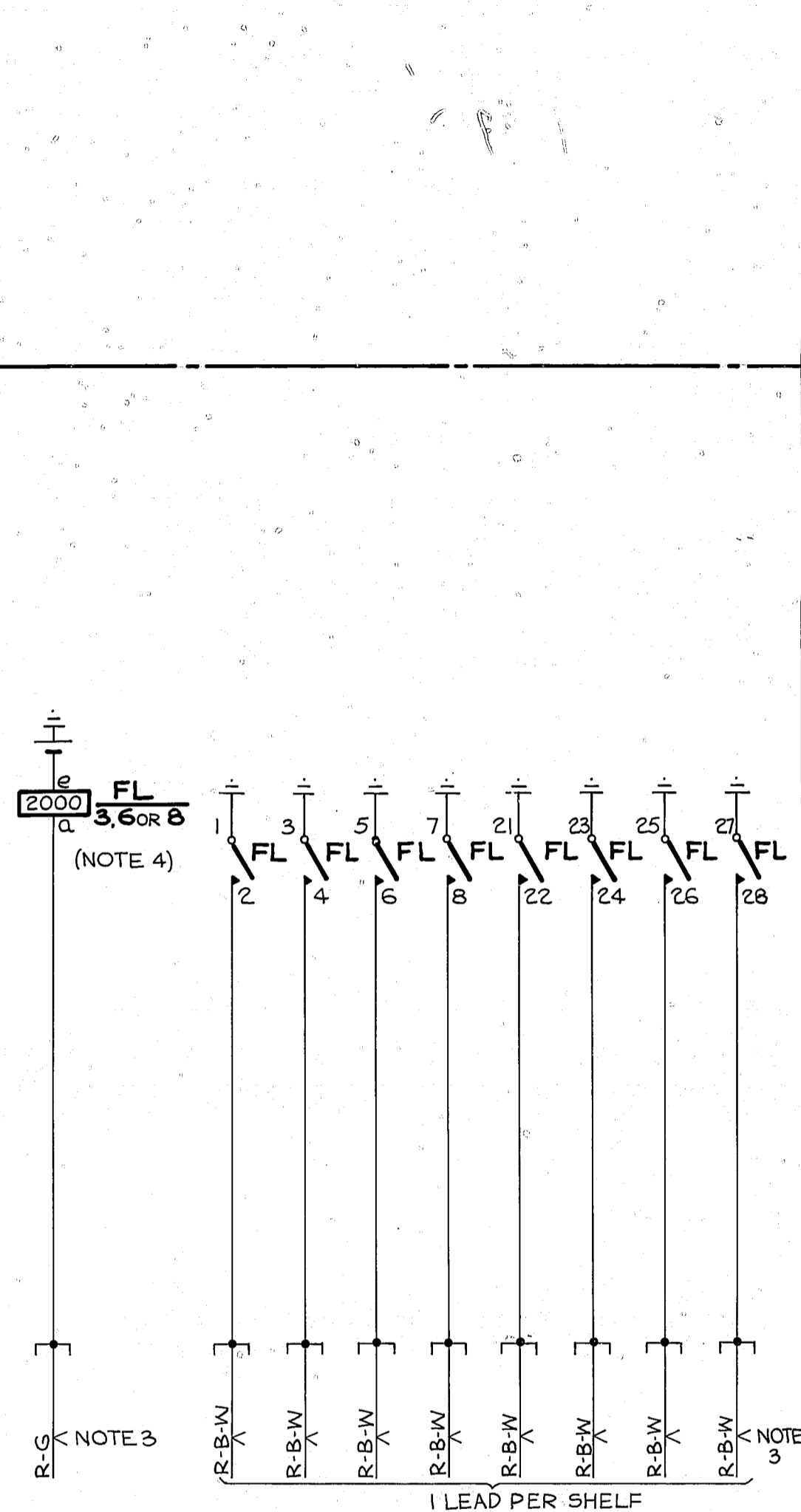


FIG. 10A
1 'FL' CONTACT PER SHELF
REF: GBW 10930 OR EQUIV.

FIG. 11
FLICKER EARTH

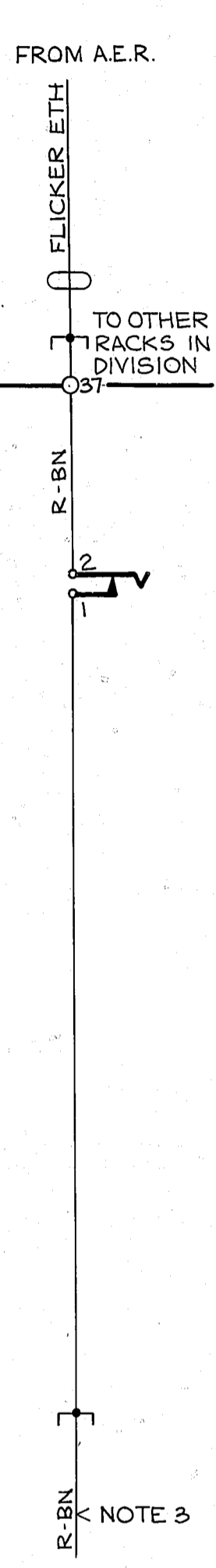


FIG. 11A
1 PER RACK
REF: GBW 10930 OR EQUIV.

FIG. 12
INTERRUPTED EARTH

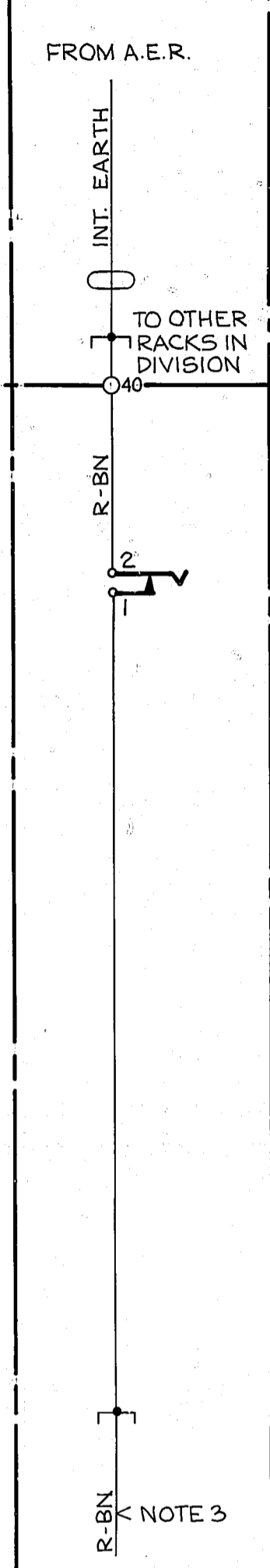


FIG. 12A
1 PER RACK
REF: GBW 10930 OR EQUIV.

FIG. 13
POSITIVE BATTERY

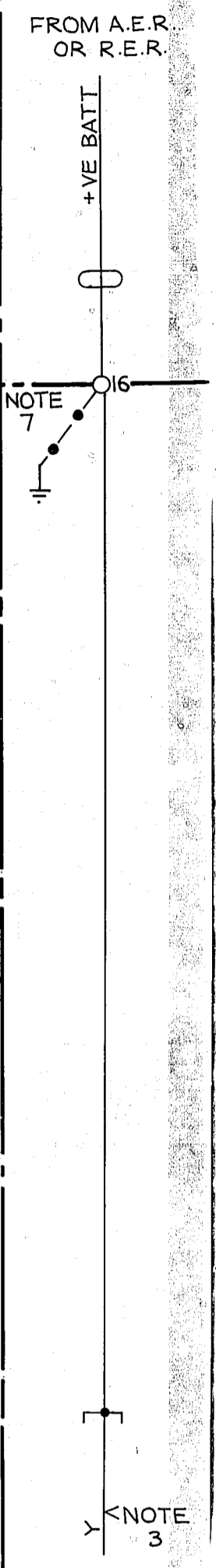


FIG. 13A
1 PER RACK
REF: GBW 11000 OR EQUIV.

NOTES (N.Z. NOTES REFER SHEET 1)

- UNLESS OTHERWISE SPECIFIED ALL WIRING BEARING A COLOUR CODE TO BE 0.7mm PLATE WIRING TO BE 0.5mm. & WHEN NOT INCLUDED IN LOCAL CABLE, COLOURS IN BRACKETS:-(R-O) TO BE DISREGARDED.
- UNLESS OTHERWISE SPECIFIED TAGS ARE ON MISC STRIP CONN.
- FOR TERMINATION OF COMMON SERVICES SEE ASSOCIATED SHELF JACK DIAGRAMS.
- 1 OR 2 FL RELAY SHALL BE PROVIDED TO MEET RACK REQUIREMENTS WITH A MINIMUM OF SPARE CONTACTS.
- VALUE OF BOOSTER BATT TO BE DETERMINED ON SITE, WHEN NOT REQ'D REMOVE BATT AND STRAP TERML'S + & - ON BATT BOX. BOOSTER BATTERY SUPPLIED BY CUSTOMER.
- WHEN MORE THEN 8 SHELVES ARE FITTED USE RELAY C₅/B₈

- ON RACKS WHERE METERING IS NOT REQUIRED CONNECT TERMINAL 16 TO EARTH & DISCONNECT THE POSITIVE BATTERY LEAD BOTH AT THE R.S.R. & AT THE A.E.R.
- WHEN FIG. 6C/31C IS NOT PROVIDED ADD STRAPS SHOWN THUS —X—X—X—X—
- ON TAGS FOR GROUPS 1-3 USE TAGS 44, 50, 51 RESPECTIVELY.
- ST TAGS FOR GROUPS 1-3 USE TAGS 52, 53, 54 RESPECTIVELY.
- TAG NOS IN BRACKETS APPLY ONLY WHEN FIGS 6 & 31 ARE PROVIDED ON THE SAME RACK.
- ON SOME EARLY EQUIPTS YA IS 1:2K Ω , -VE BATT. WIRING IS BK & +VE BATT. WIRING IS R-B.
- WHEN A CONTINUOUSLY RUNNING ALARM DELAY SET IS PROVIDED 1ST LEAD IS NOT REQUIRED.

BATT. V FUSE —(B)— FL_e - ETC
ETH. R ETH BAR —(A)— FL₂₁-FL₂₃-FL₂₅-FL₂₇-FL₁-FL₃-FL₅-FL₇ ETC

RACK COMMON SERVICES RELAY SET RACK 2000 TYPE			
REDWN & METRICATED FROM 155 21A OF 25 8/77 (193642)	21B	27-10-78	
AMENDMENT PARTICULARS	155	DATE	
NZPO	DRAWN	CHECKED	WIRING CIRCUIT
40	45		50
GBW 10640			55 SHT. 2 of 6



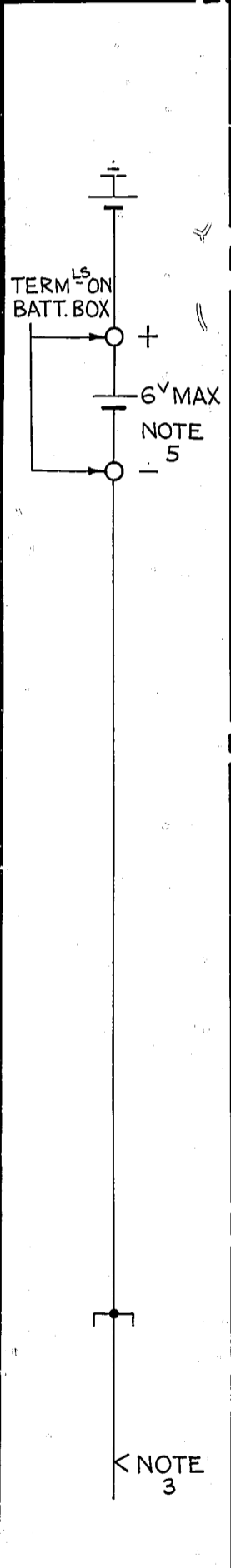
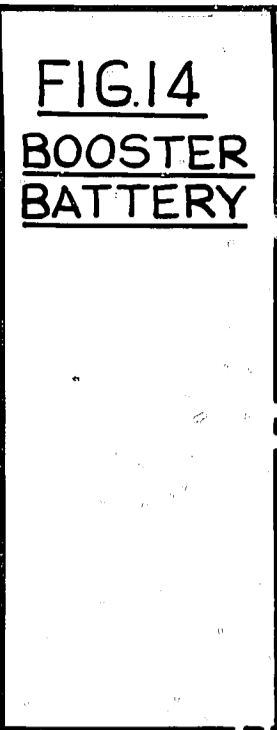


FIG.14A
1 PER RACK
BATT. V FUSE — BOOSTER BATT+VE TERM

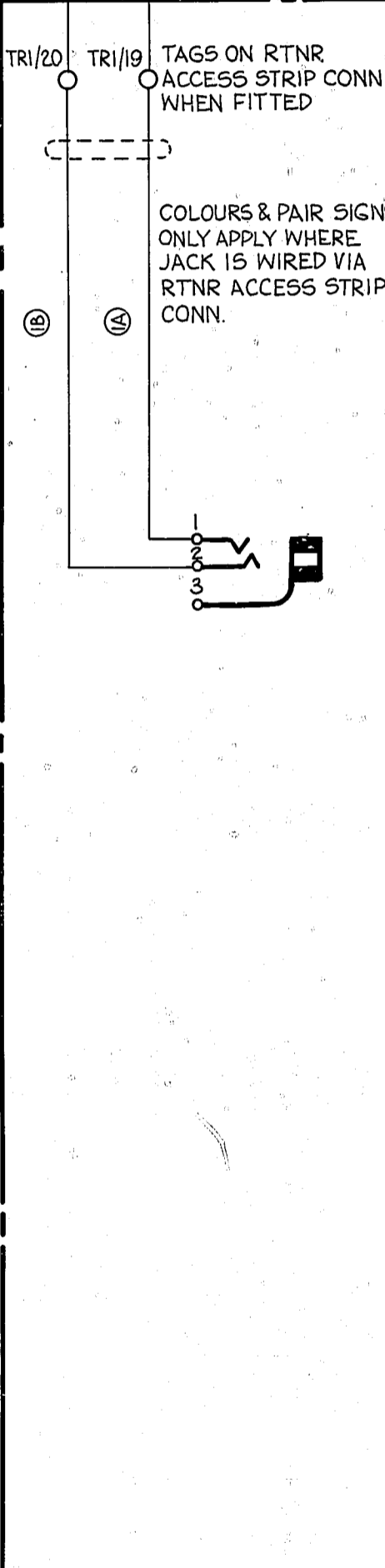
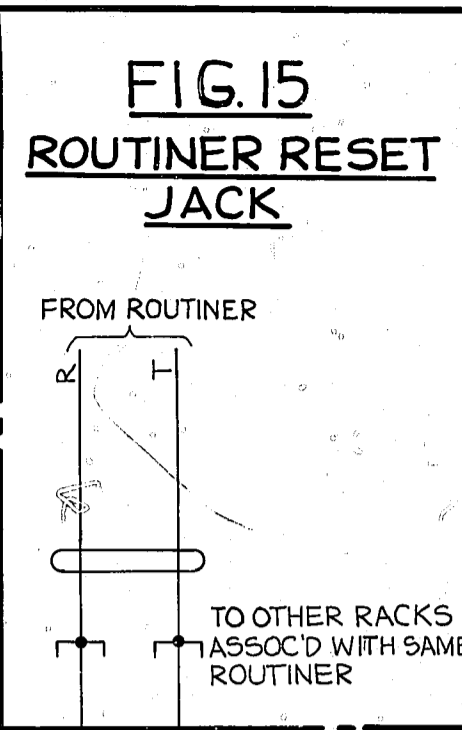


FIG.15A
1 PER RACK

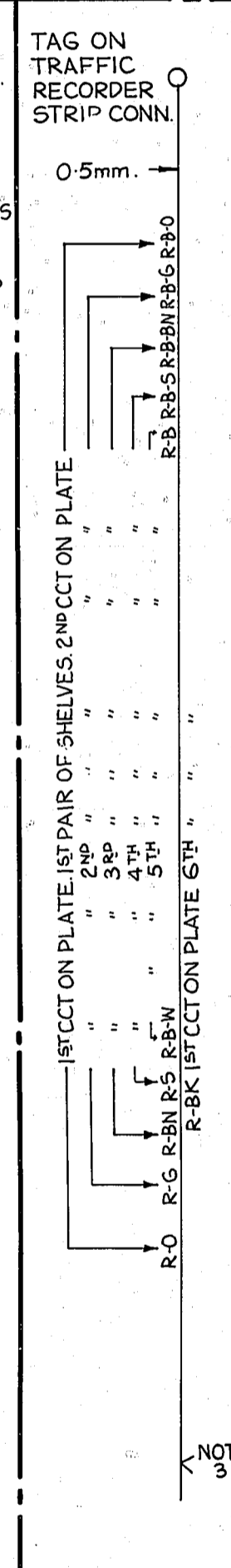
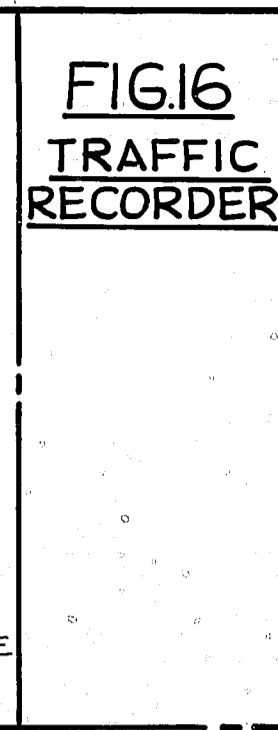


FIG.16A
1 OR 2 PER RELAY SET AS REQUIRED

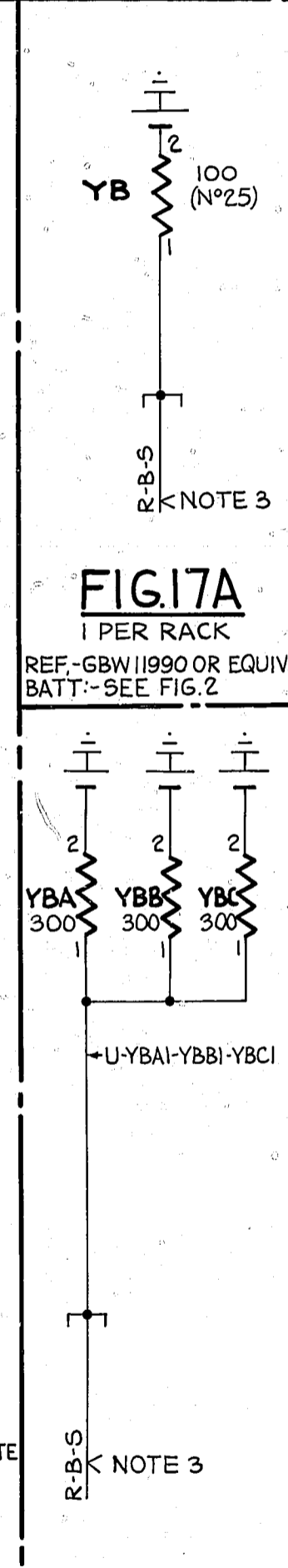
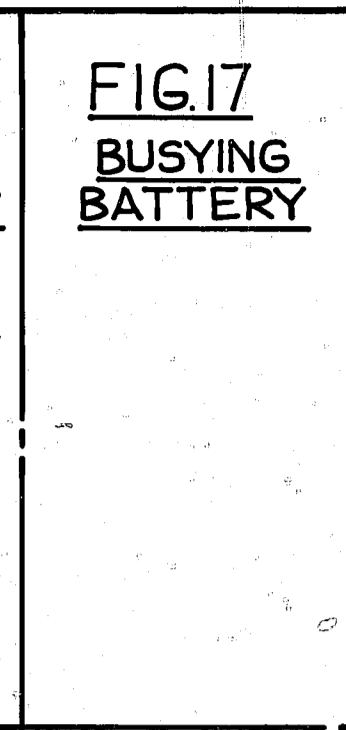


FIG.17A
1 PER RACK
REF. GBW 11990 OR EQUIV.
BATT: SEE FIG. 2

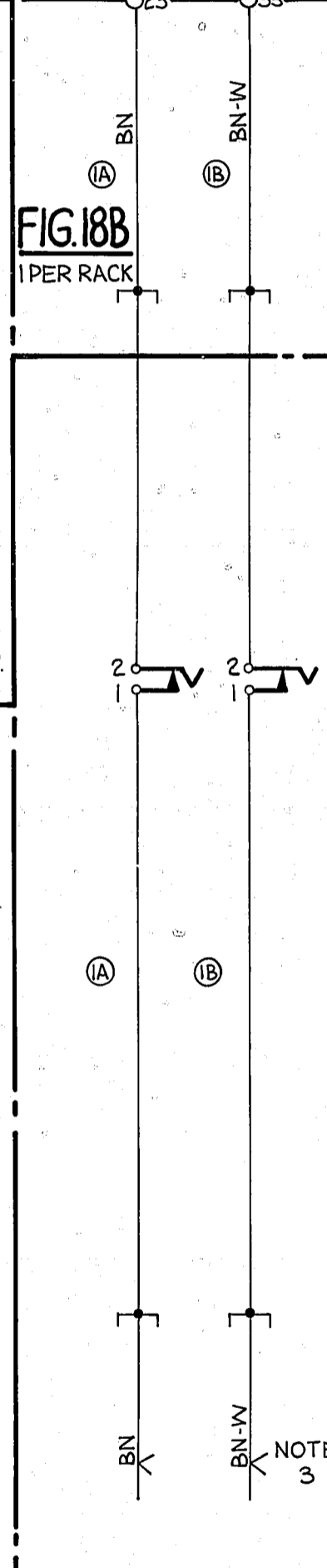
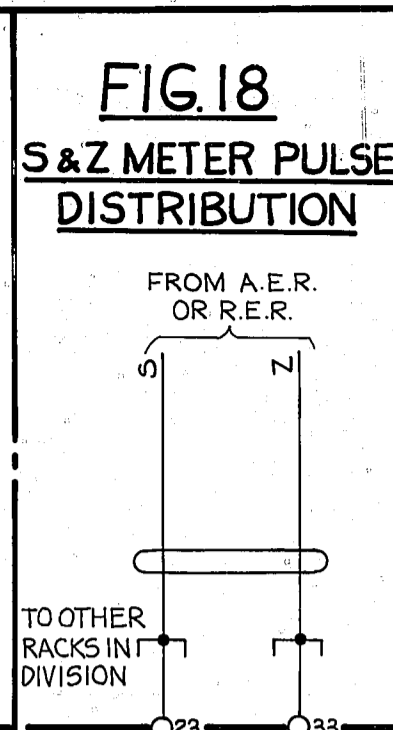


FIG.18A
1 PER RACK
REF. GBW 10910 OR EQUIV.

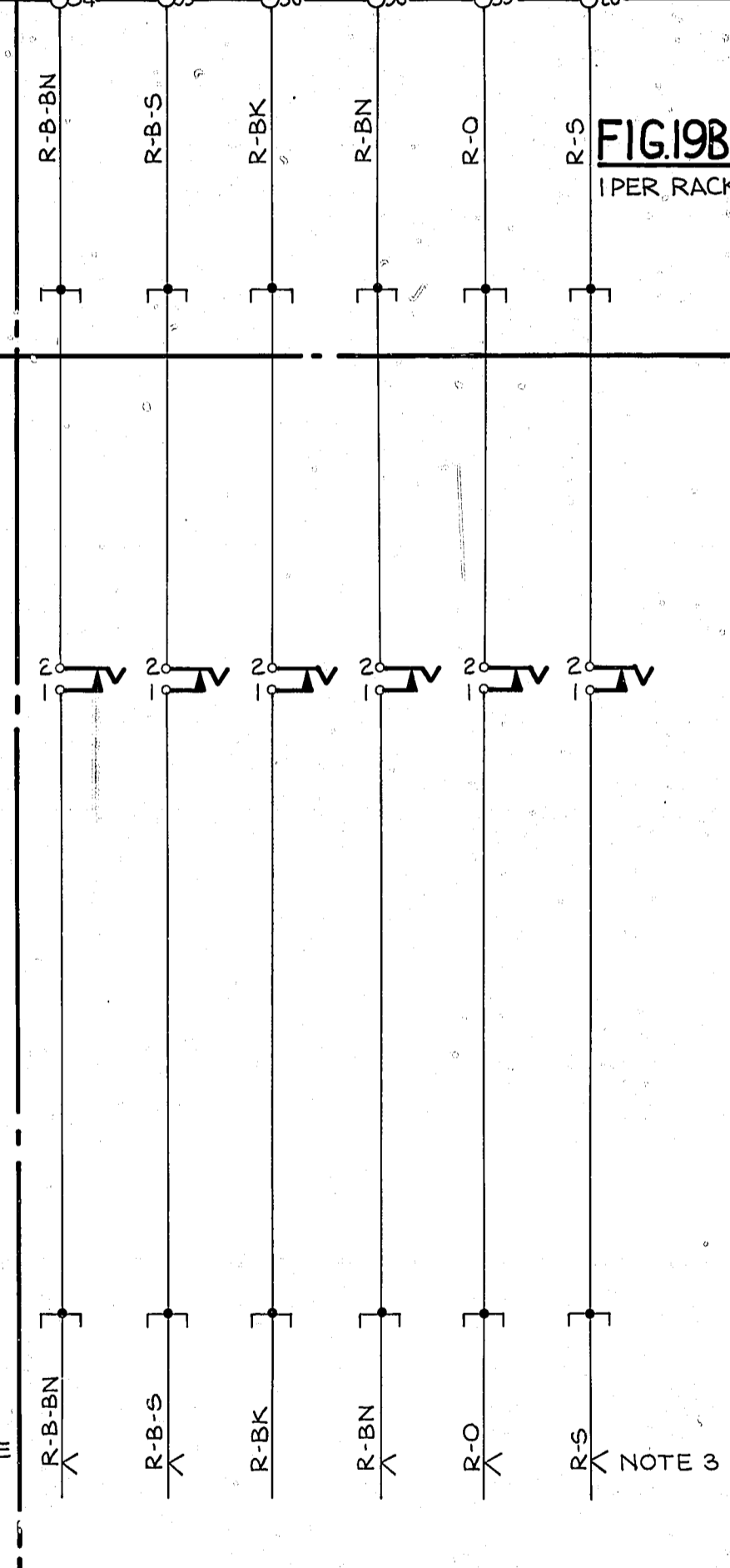
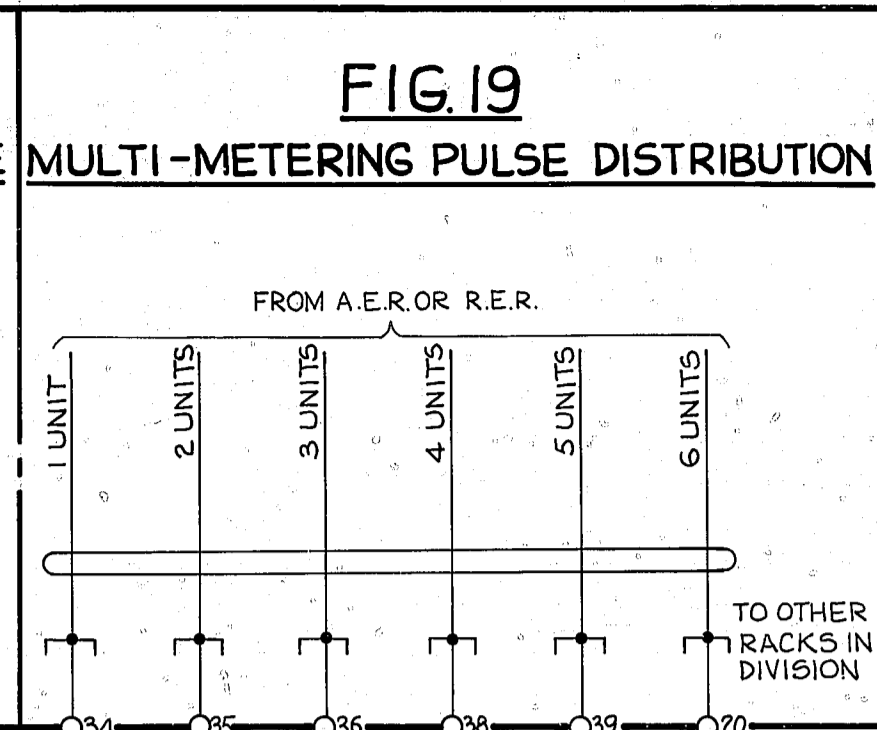


FIG.19A
1 PER SHELF
REF. GBW 10910 OR EQUIV.

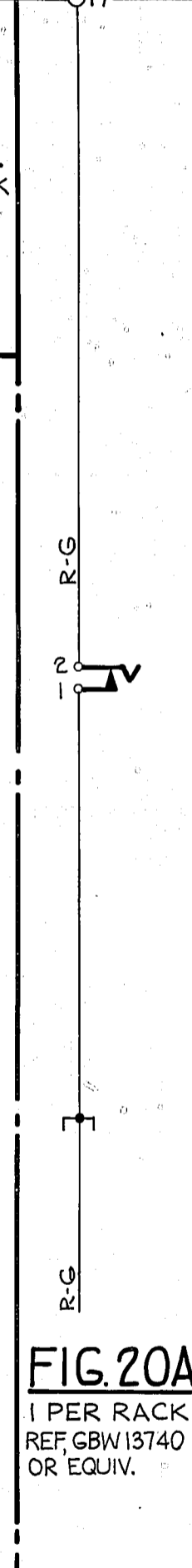
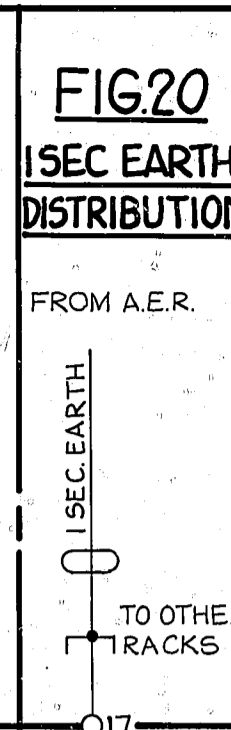


FIG.20A
1 PER RACK
REF. GBW 13740 OR EQUIV.

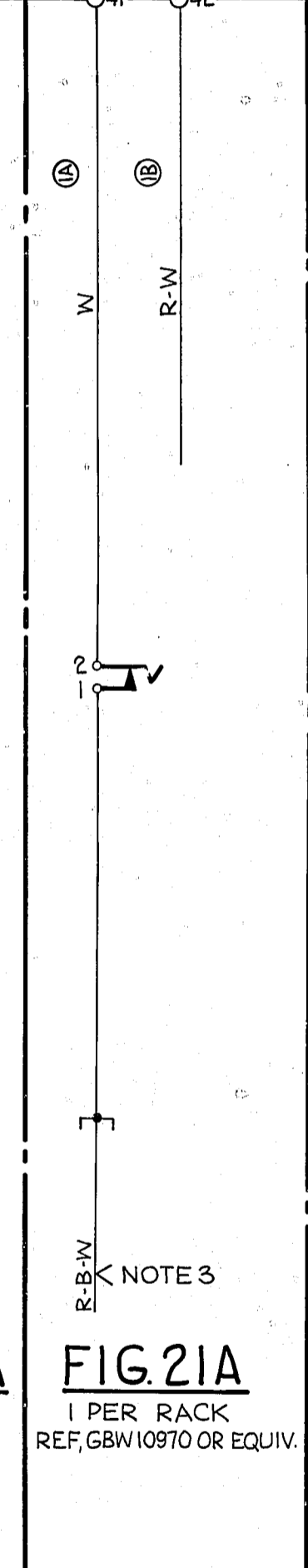
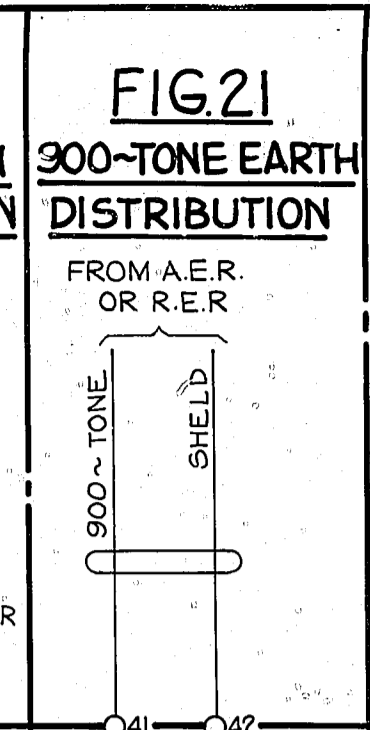


FIG.21A
1 PER RACK
REF. GBW 10970 OR EQUIV.

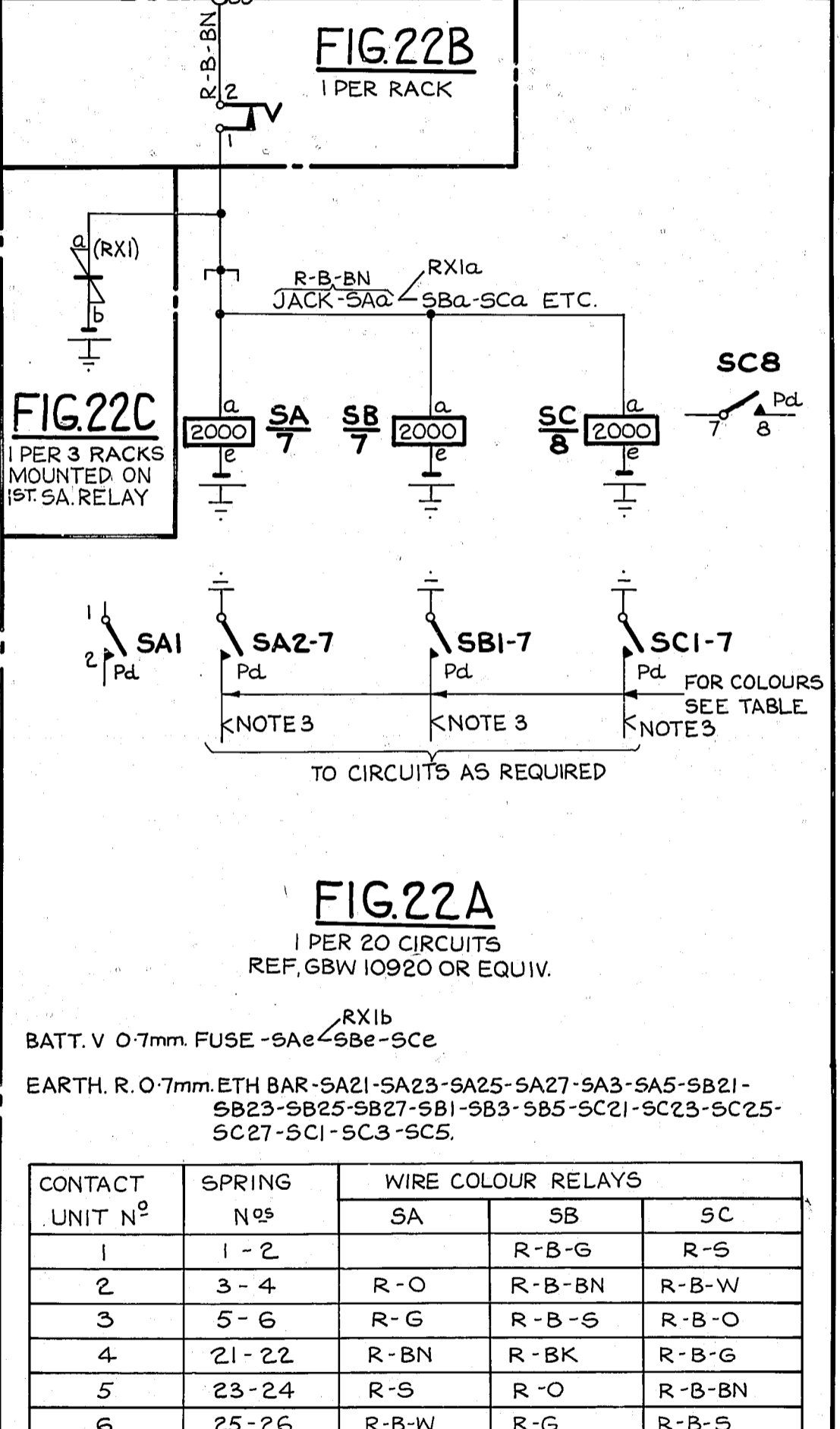
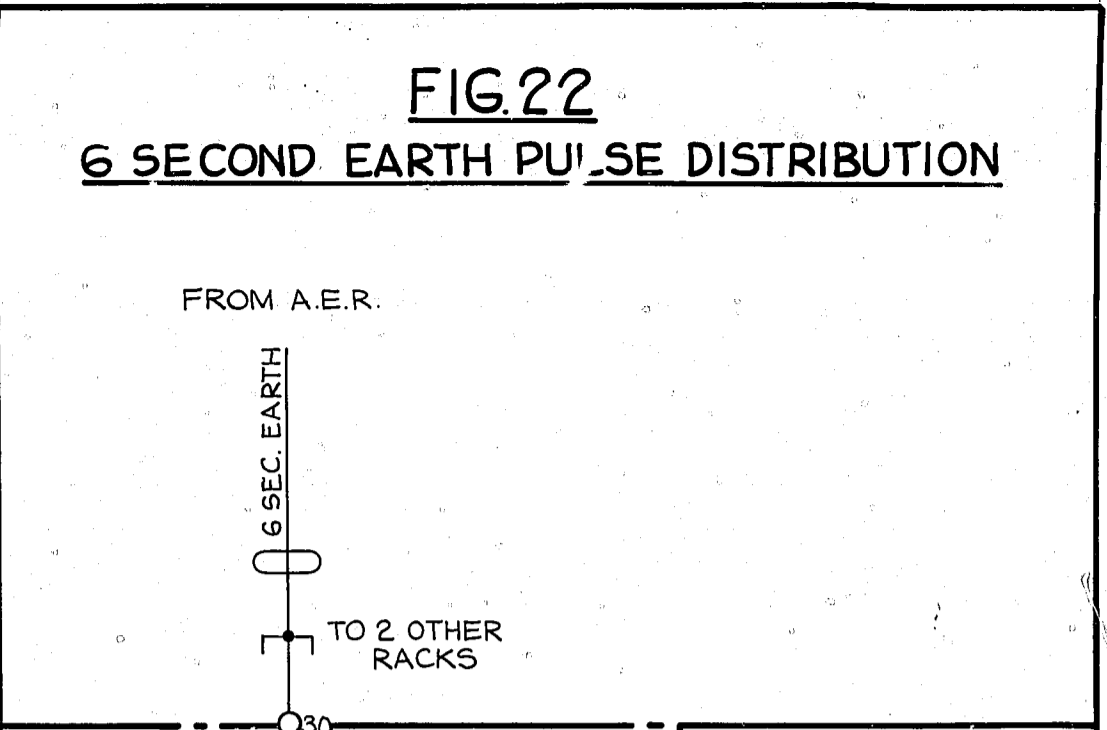


FIG.22A
1 PER 20 CIRCUITS
REF. GBW 10920 OR EQUIV.

FIG.22B
1 PER RACK

CONTACT UNIT N ^o	SPRING N ^o s	WIRE COLOUR RELAYS		
		SA	SB	SC
1	1-2	R-O	R-B-G	R-S
2	3-4	R-G	R-B-BN	R-B-W
3	5-6	R-BN	R-B-S	R-B-O
4	21-22	R-BN	R-BK	R-B-G
5	23-24	R-S	R-O	R-B-BN
6	25-26	R-B-W	R-G	R-B-S
7	27-28	R-B-O	R-BN	R-BK
8	7-8			

RACK COMMON SERVICES RELAY SET RACK 2000 TYPE

REDWN & METRICATED FROM ISS. 21A 25.8.77 (193642) 21B 21.10.78 R.F.D.

AMENDMENT PARTICULARS 155 DATE APR 50

SIZE A2 50V E

N.Z.P.Q. DRAWN 15 CHECKED WIRING CIRCUIT 50

GBW 10640

55 HT. 3 OF 6

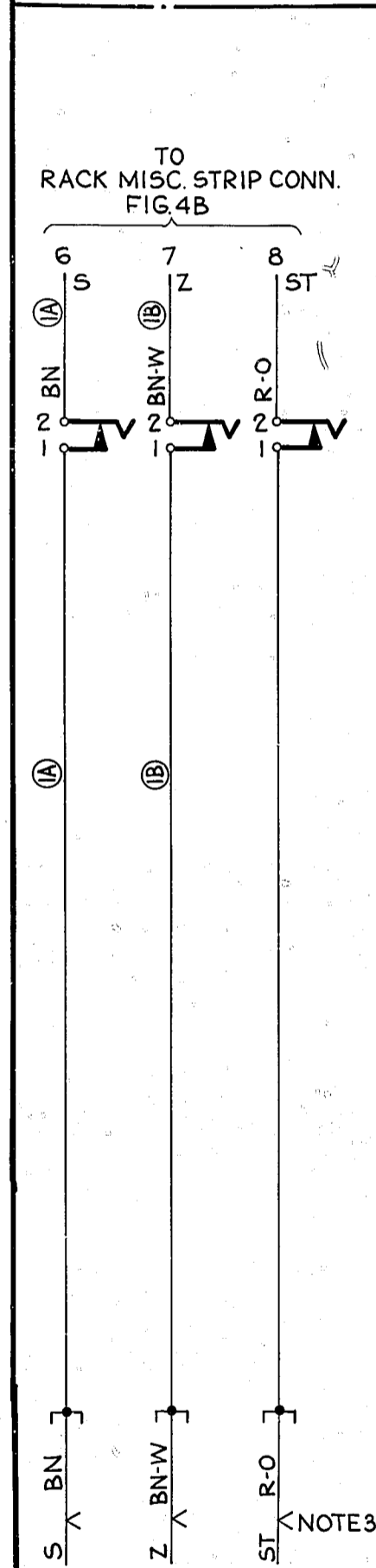
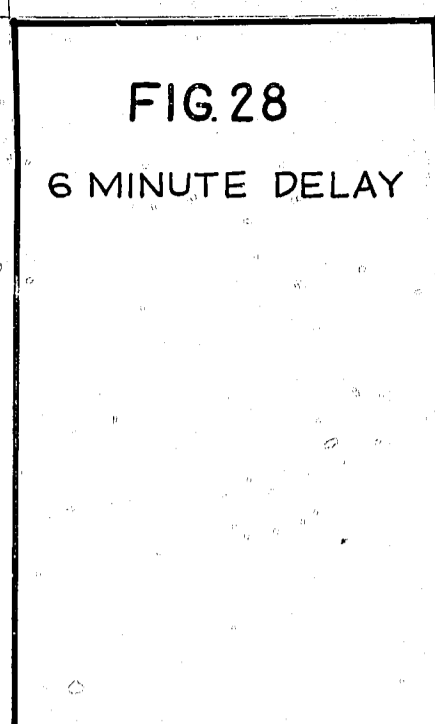


FIG. 28A
1 PER RACK

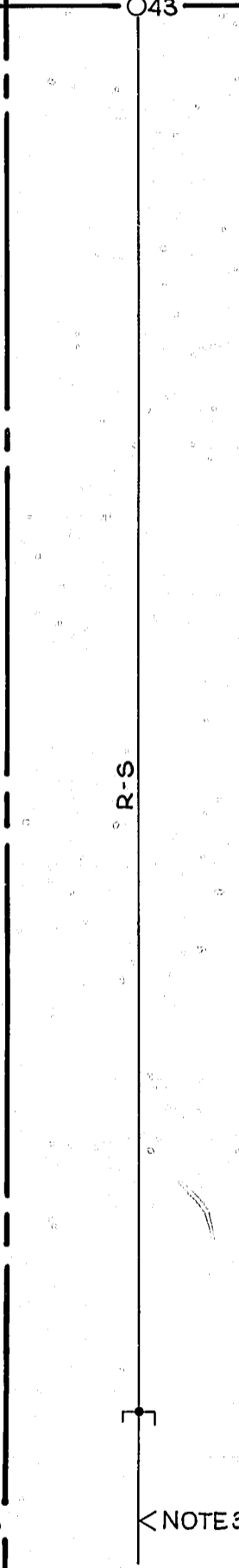
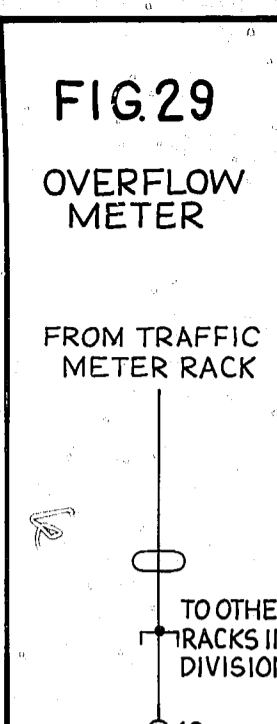


FIG. 29A
1 PER RACK

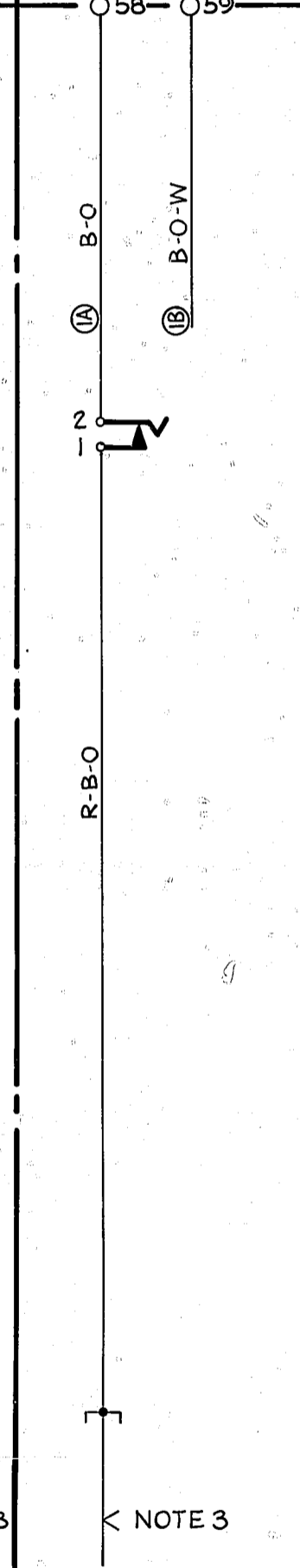
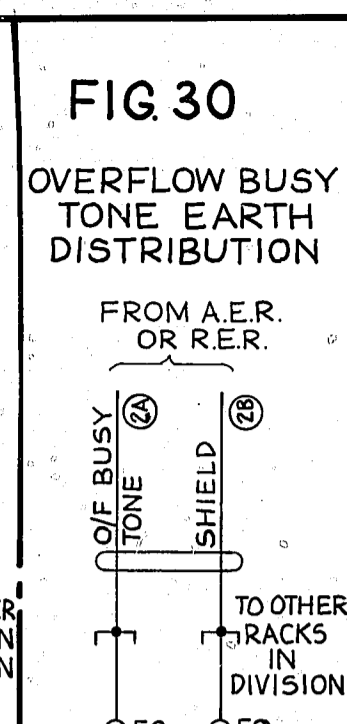


FIG. 30A
1 PER RACK

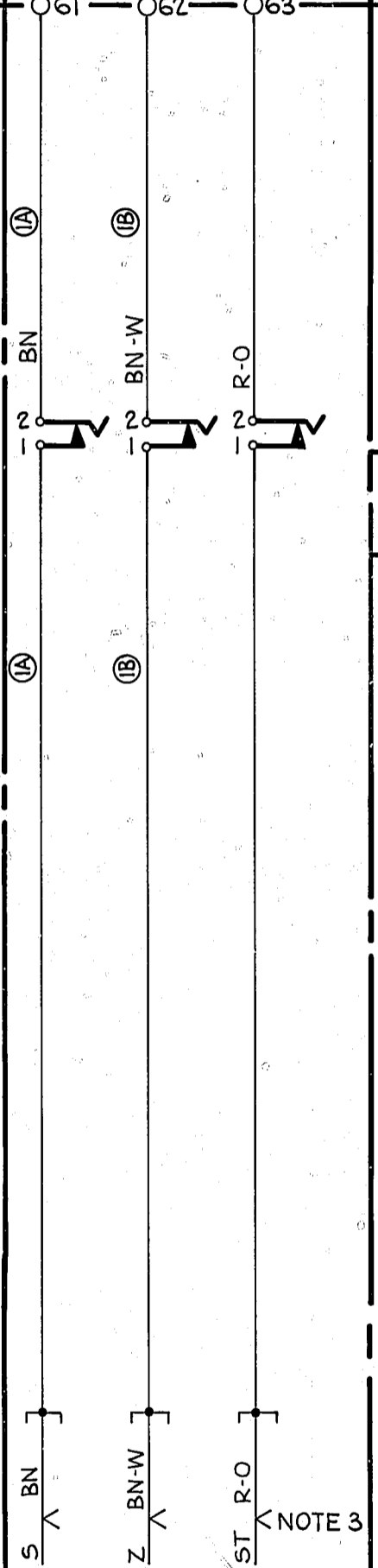
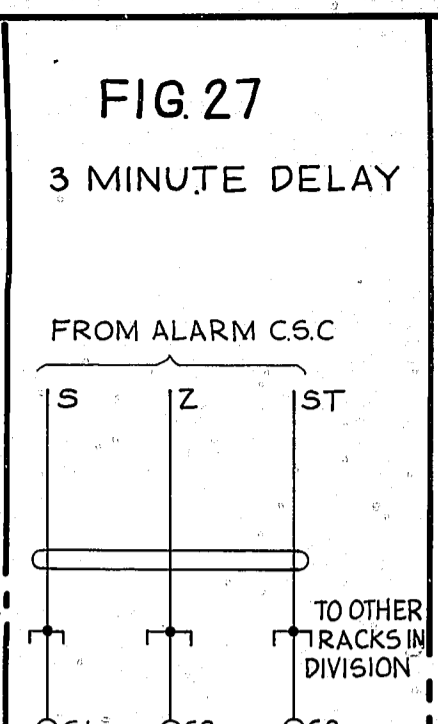


FIG. 27A
1 PER RACK

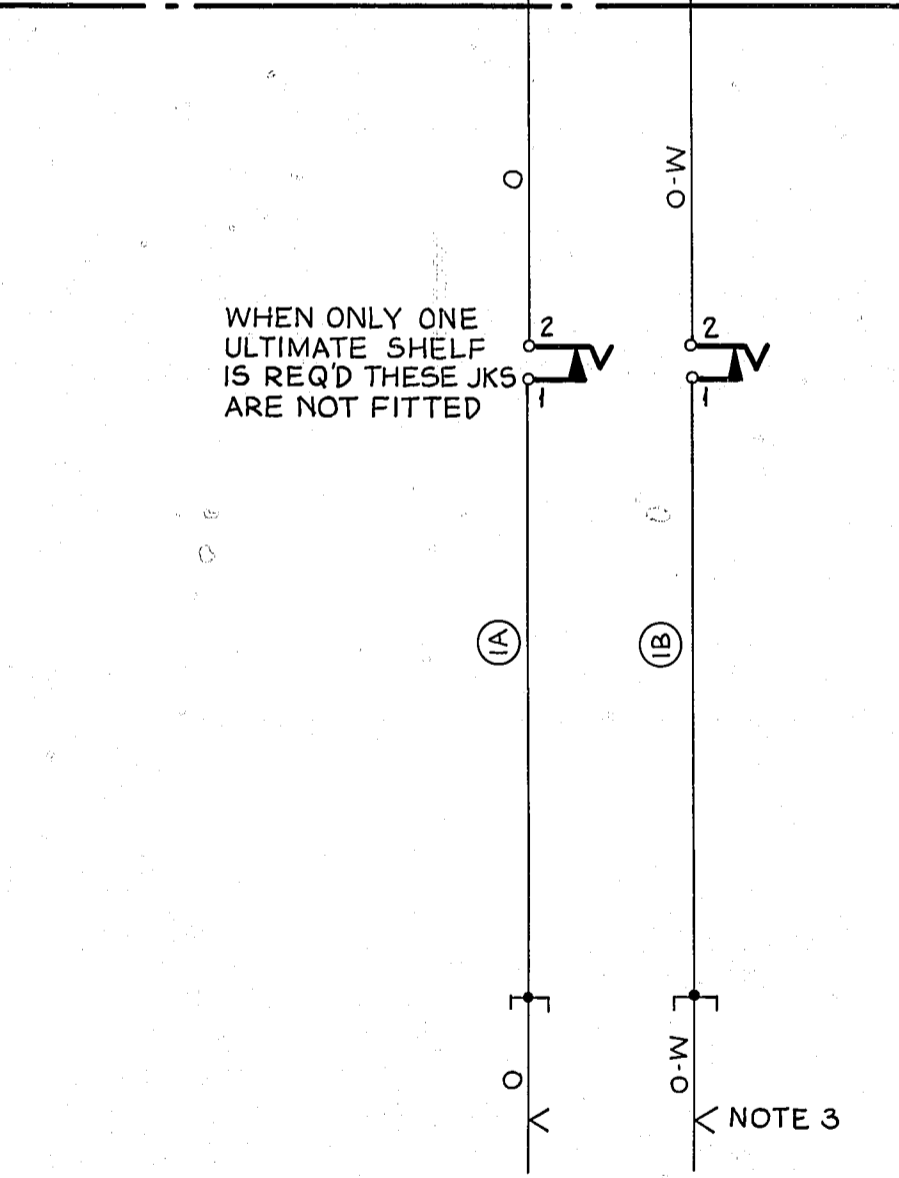
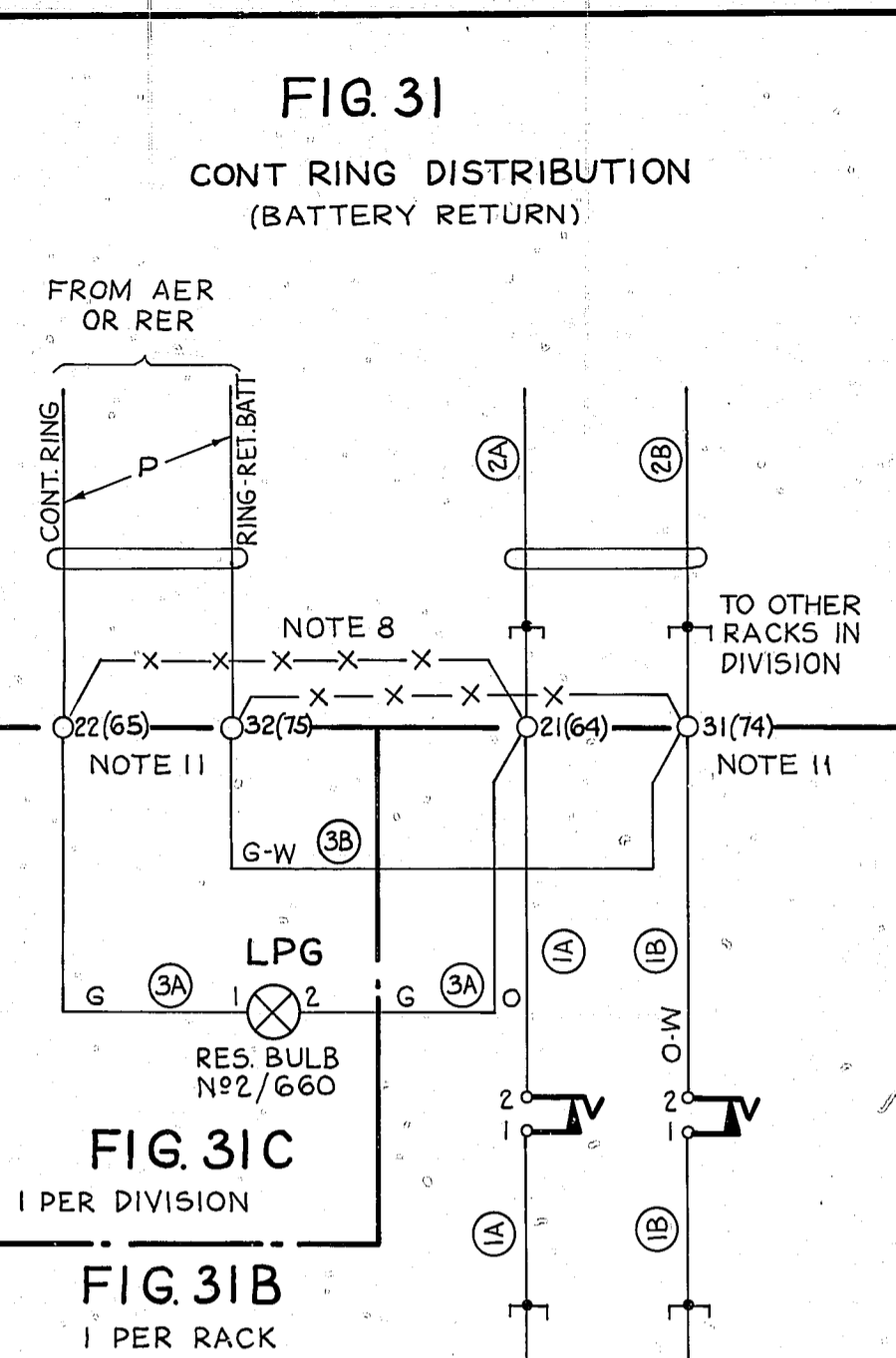


FIG. 31A
1 PER SHELF
REF:- GBW. 15250 OR EQUIV.

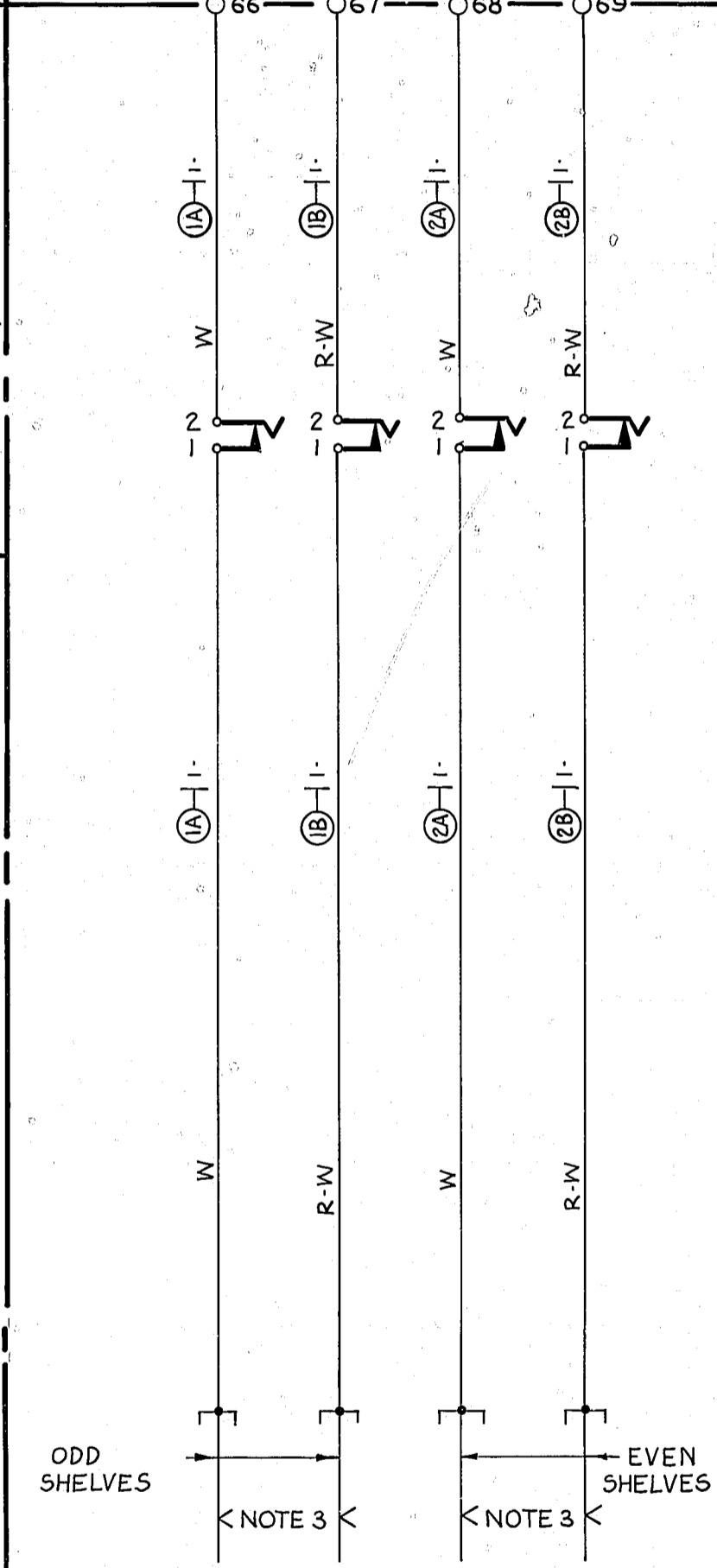
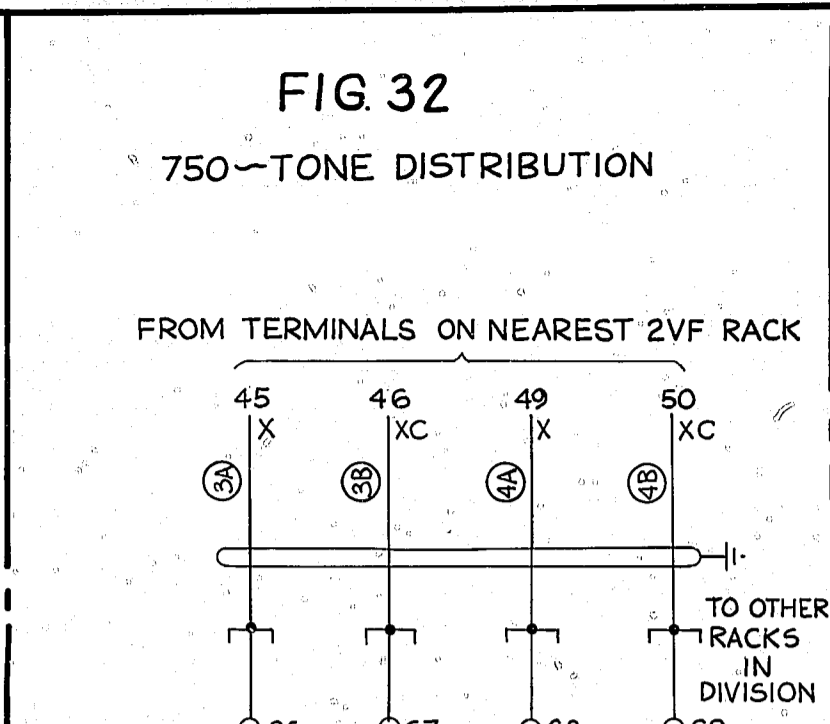


FIG. 32A
1 PER RACK

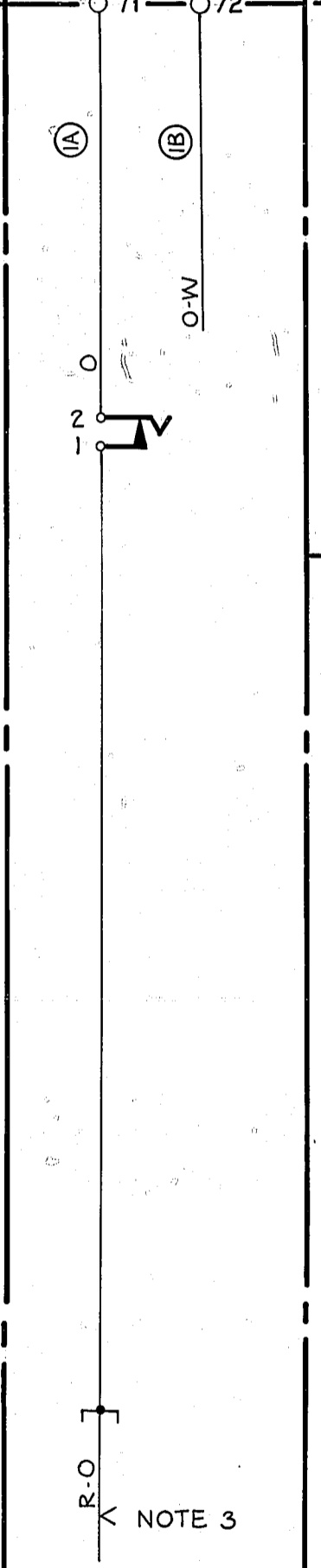
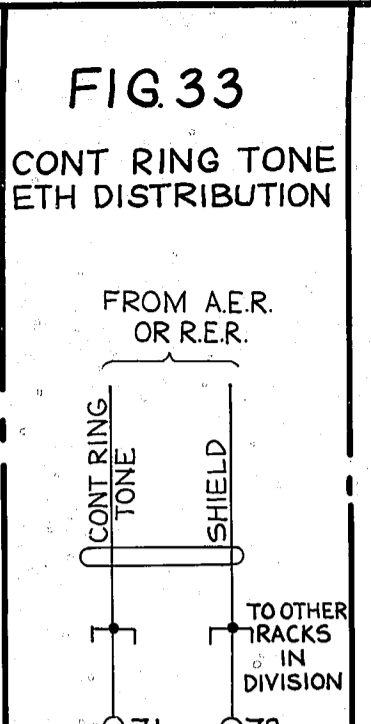


FIG. 33A
1 PER RACK
REF: GBW10970 OR EQUIV

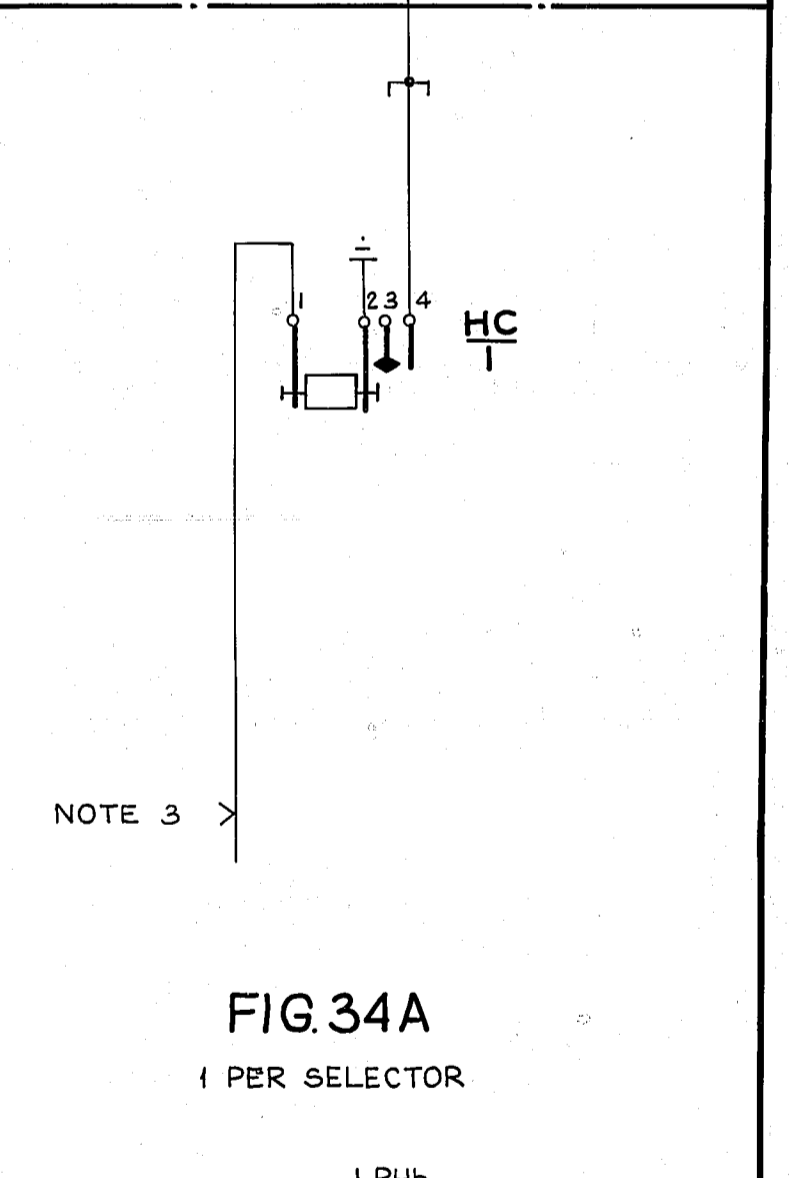
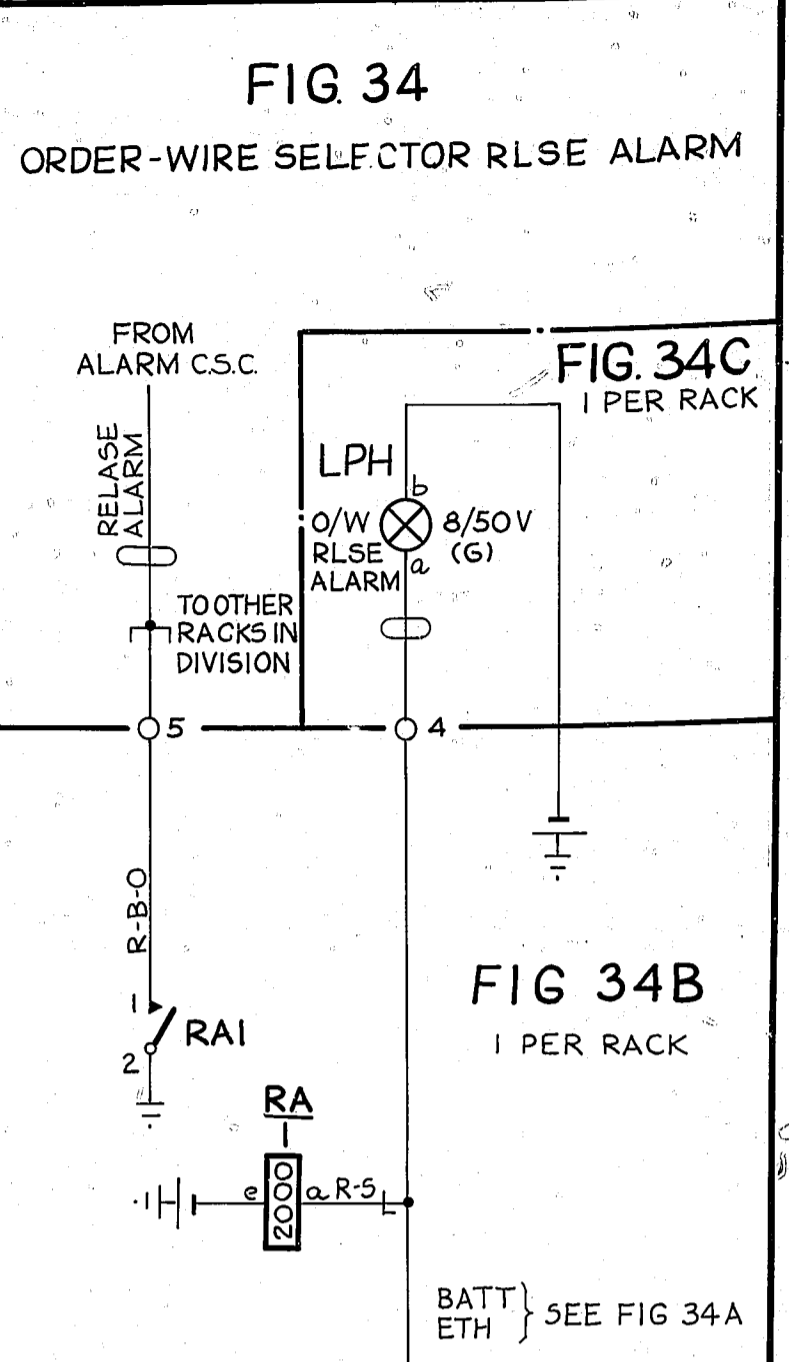


FIG. 34A
1 PER SELECTOR

BATT V FUSE ← LPHb
RAe
EARTH R ETH BAR — RAI-HC2 ETC

RACK COMMON SERVICES RELAY SET RACK			
2000 TYPE			
REDWN & METRICATED FROM ISS 21A 25-8-77 (193642)	21B	27-10-78	R.E.D.
AMENDMENT PARTICULARS	ISS	DATE	APP.
NZPQ	40	45	50
DRAWN CHECKED WIRING CIRCUIT			SIZE A2 50V E
GBW10640			55SHT 5-6



FIG. 35

BALANCED RINGING
DISTRIBUTION

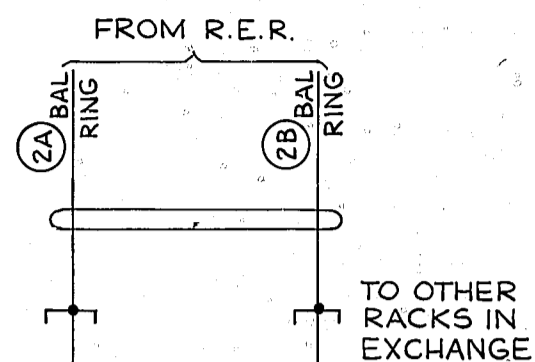


FIG. 35B
1 PER RACK

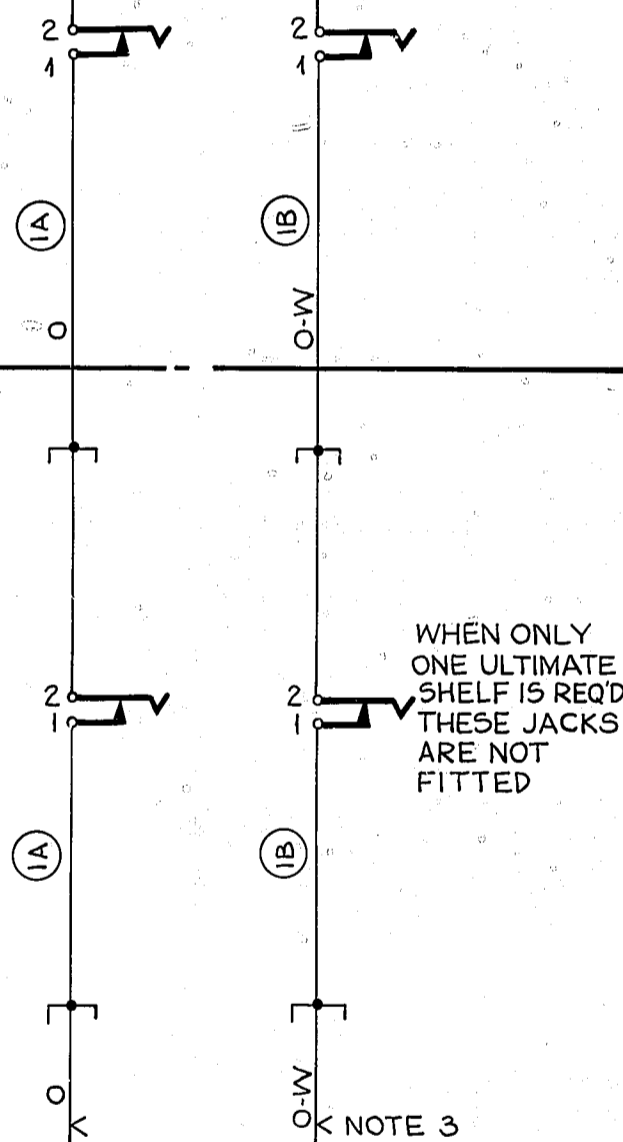
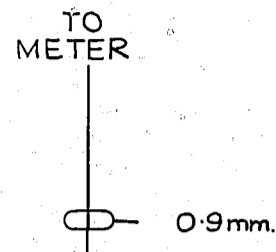


FIG. 35A
1 PER SHELF

REF GBW 15250 OR EQUIVALENT

FIG. 36

LATE CHOICE
CALL & UNIT METER



TO 'P' TAG ON LAST WORKING OUTLET OF SECOND HALF OF GRADING

1 PER GRADING

FIG. 37

REMOTE CROSS-BAR EXCHANGE ALARM PROMPT
PART OF MISCF XC 73793-001 OR EQUIV.

EXPLANATORY ONLY

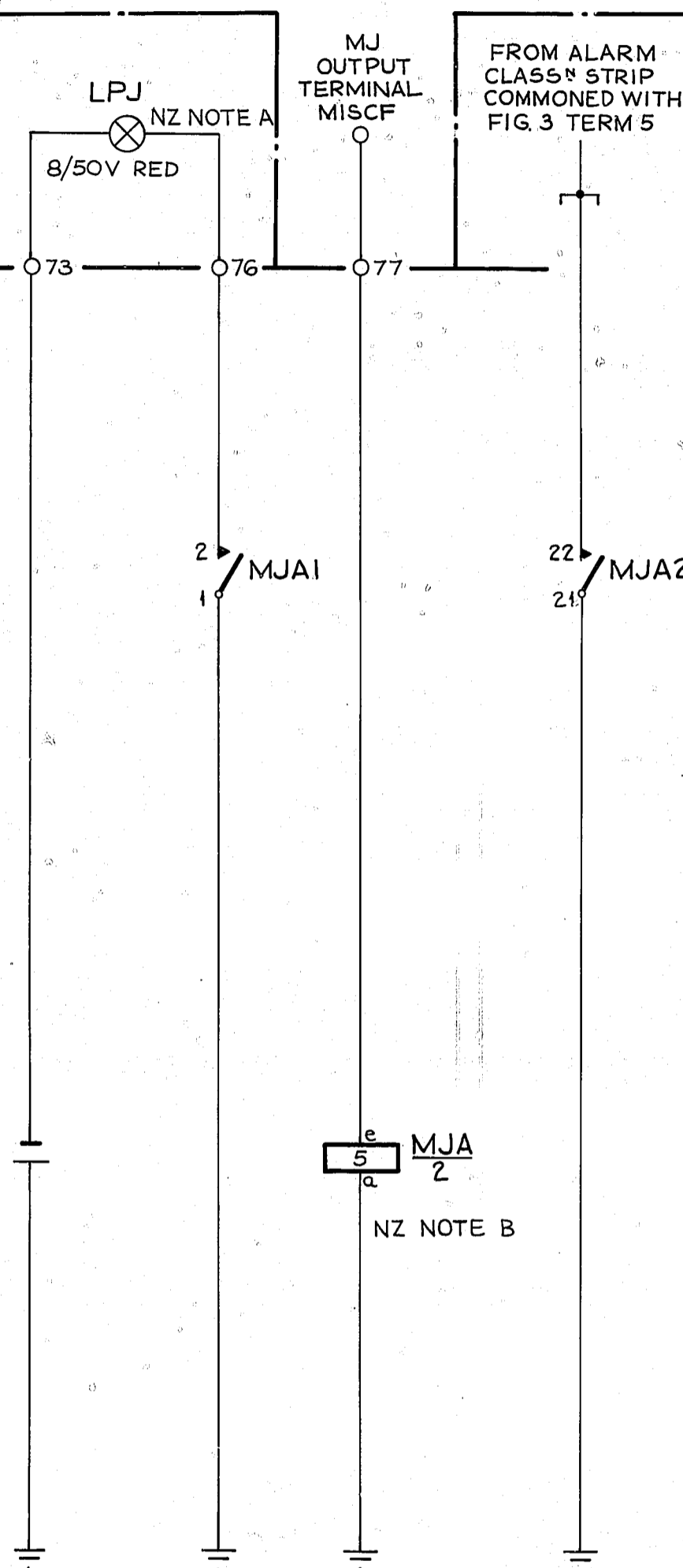


FIG. 37A

MOUNTED ON ONE R/S RACK IN THE SAME SUB-SECTION AS THE MISCF

BATT V FUSE - TAG 73

EARTH R ETH BAR < MJAa-MJA1-MJA21
MNAa-MNA1-MNA21

AS REQUIRED

FIG. 38

REMOTE CROSS-BAR EXCHANGE ALARM DEFERRED
PART OF MISCF XC 73793-001 OR EQUIV.

EXPLANATORY ONLY

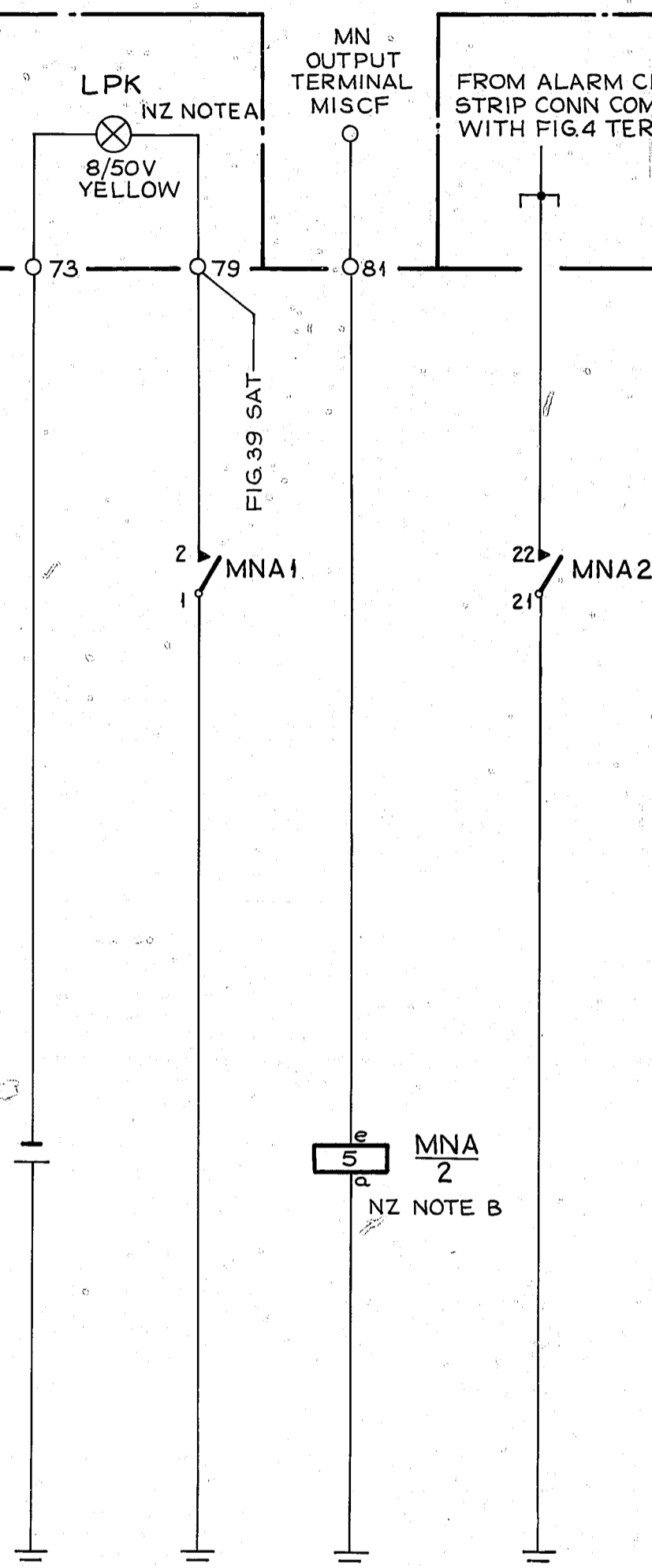


FIG. 38A

MOUNTED ON ONE R/S RACK IN THE SAME SUB-SECTION AS THE MISCF

BATT V FUSE - TAG 73

EARTH R ETH BAR < MJAa-MJA1-MJA21
MNAa-MNA1-MNA21

AS REQUIRED

FIG. 39

REMOTE CROSS-BAR EXCHANGE ALARM
PART OF NC 400ZA-ALREC XC73638

EXPLANATORY ONLY

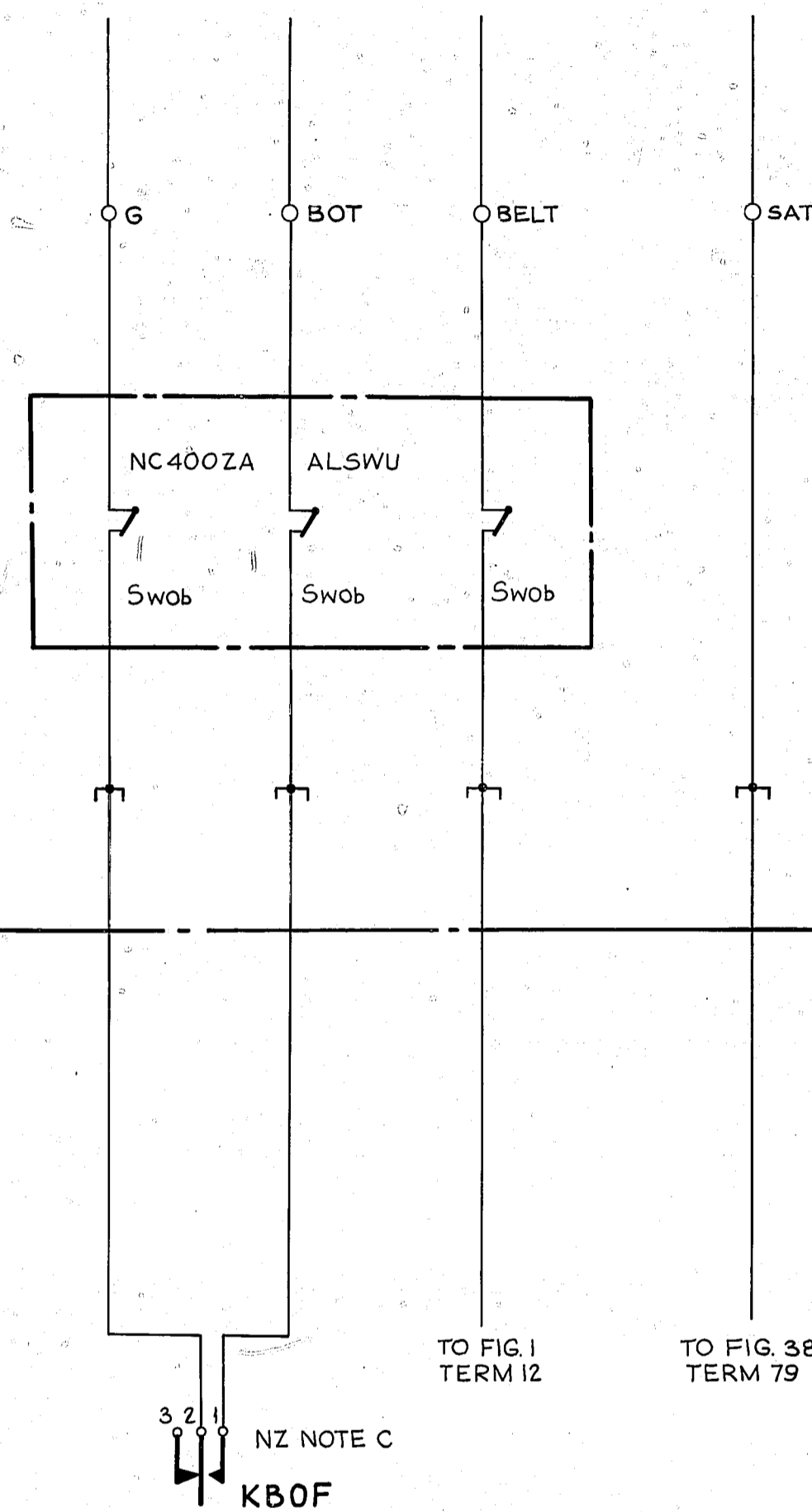


FIG. 39A

MOUNTED ON ONE R/S RACK IN THE SAME SUB-SECTION AS THE MISCF

AS REQUIRED

				RACK COMMON SERVICES RELAY SET RACK 2000 TYPE			
REDRAWN & METRICATED FROM ISS 21A 25-8-77				21B	27-10-78	RED.	
FIGS 39&39A ADDED FIG 3A AMD				(193642)			
AMENDMENT PARTICULARS				ISS	DATA	APP	SIZE A2 50V E
NZPQ0		DRAWN	CHECKED	WIRING	CIRCUIT		GBW 10640
		4	5				55HT 6-6

