

FIG.1. TEST DESK MISC. POSITION. 1 PER EXCHANGE. OR TEST RACK. 1 PER EXCHANGE.

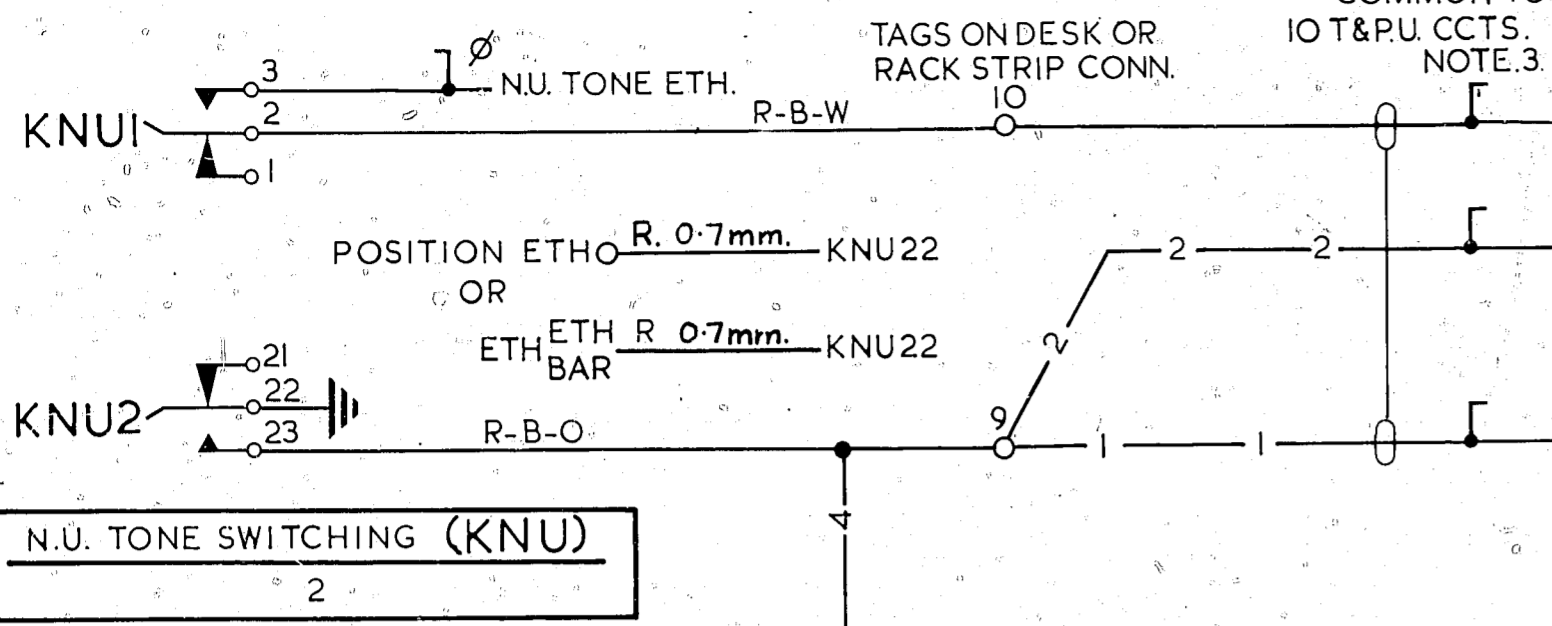


FIG.4. TEST DESK MISC. POSITION. 1 PER TEST POSITION (NOTES.4 & 5.)

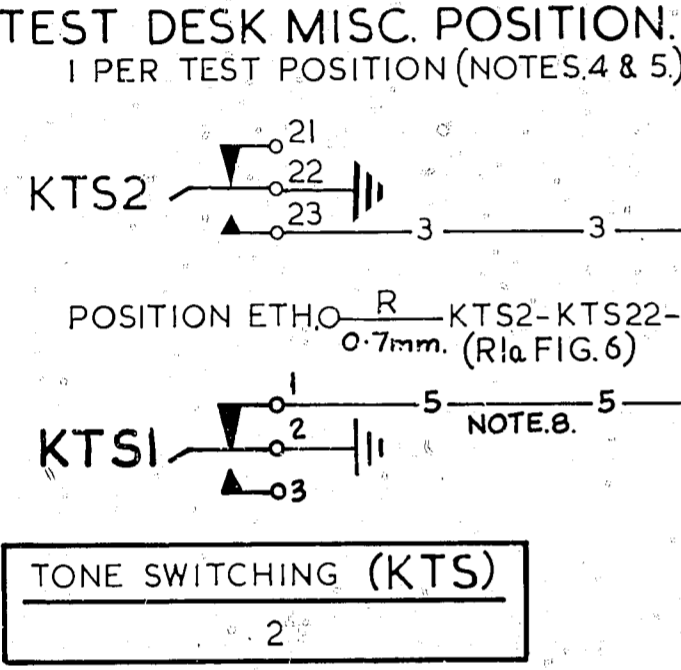


FIG.5. MISC. POSITION. 1 PER TEST POSITION OR TEST RACK.

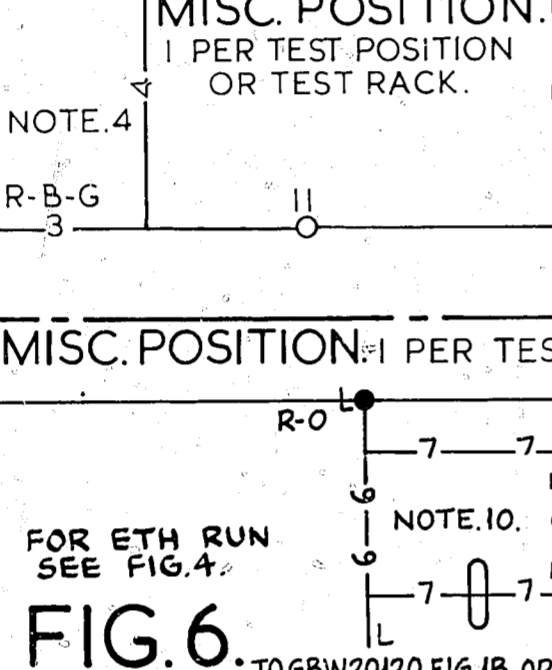


FIG.6. TO GBW20120 FIG.1B. OR EQUIV.

- NOTES:-**
- FUSE:- FIG.2 1-5A PER IO RELAYS. FIG.3 1-5A PER IO RELAYS.
 - ALL WIRING TO BE 0.5mm UNLESS OTHERWISE SPECIFIED.
 - WHEN 10 T & P.U. CIRCUITS ONLY ARE REQUIRED, WIRE AS SHOWN THUS -1-1- AND DELETE WIRING SHOWN THUS -2-2-. WHEN MORE THAN 10 T & P.U. CIRCUITS ARE REQUIRED, ADD FIG.2 AND WIRING SHOWN THUS -2-2- AND DELETE WIRING SHOWN THUS -1-1-.
 - WHEN LINES I/C FROM F.S. (GBW10700) ARE USED AS FAULTSMAN'S LINES, FIG.4 AND WIRING SHOWN THUS -3-3- TO BE PROVIDED AND WIRING SHOWN THUS -4-4- TO BE DELETED.
 - WHEN LINES I/C FROM F.S. (GBW10700) ARE USED AS FAULTSMAN'S LINES, THESE LINES ARE TO BE CAPABLE OF BEING SWITCHED TO N.U. TONE ON A PER TEST POSITION BASIS.
 - Ø FOR WIRING SEE ASSOCIATED COMMON SERVICES DIAGRAM.
 - TAGS TS21 AND TS2 ARE ONLY REQUIRED WHEN GBW10530 AND GBW10700 ARE EQUIPPED ON SEPARATE RACKS.
 - WHEN FIG.6 IS PROVIDED WIRING SHOWN THUS -5-5- IS ADDED.
 - ON SOME EARLY EQUIPMENT -VE 50V. BATT. COLOUR WAS BK. OR W.
 - WHEN GBW 20120 FIG.1B IS EQUIPPED ON A REMOTE RACK TERMINAL 12 AND WIRING SHOWN THUS -7-7- TO BE PROVIDED. WHEN GBW 20120 FIG.1B IS EQUIPPED ON TEST DESK OR TEST RACK WIRING SHOWN THUS -6-6- TO BE PROVIDED.
 - ON SOME EARLY EQUIPMENT METRIC WIRE SIZES WERE NOT SHOWN.

EXPLANATORY ONLY PART OF T & P.U. CIRCUIT GBW10540 OR EQUIV.

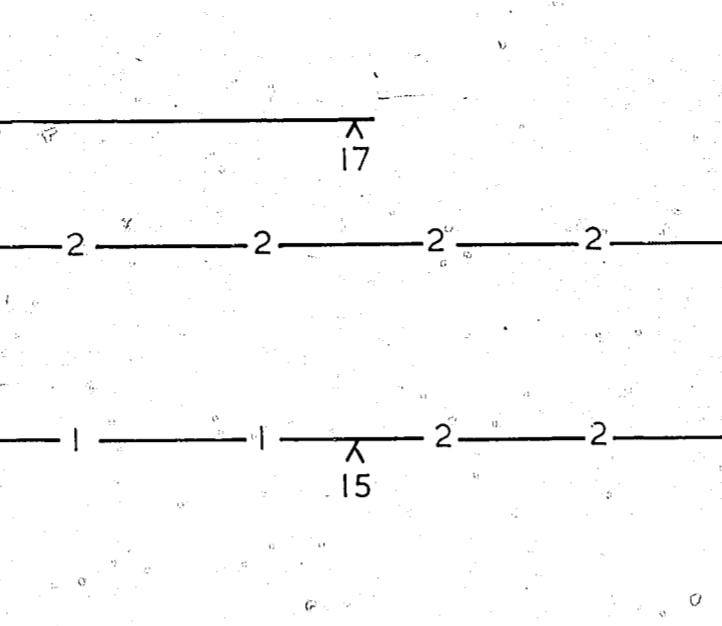


FIG.3. M.A.R. TONE SWITCHING RELAY. (NOTE.5)

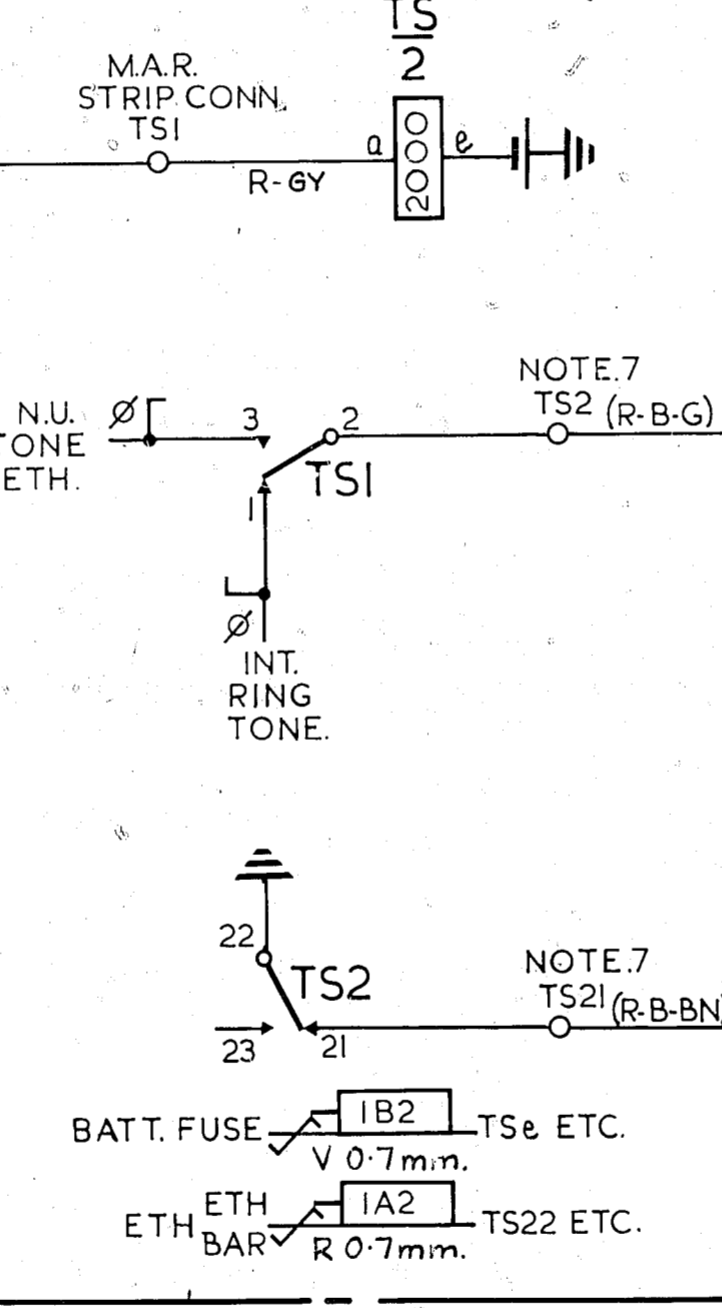
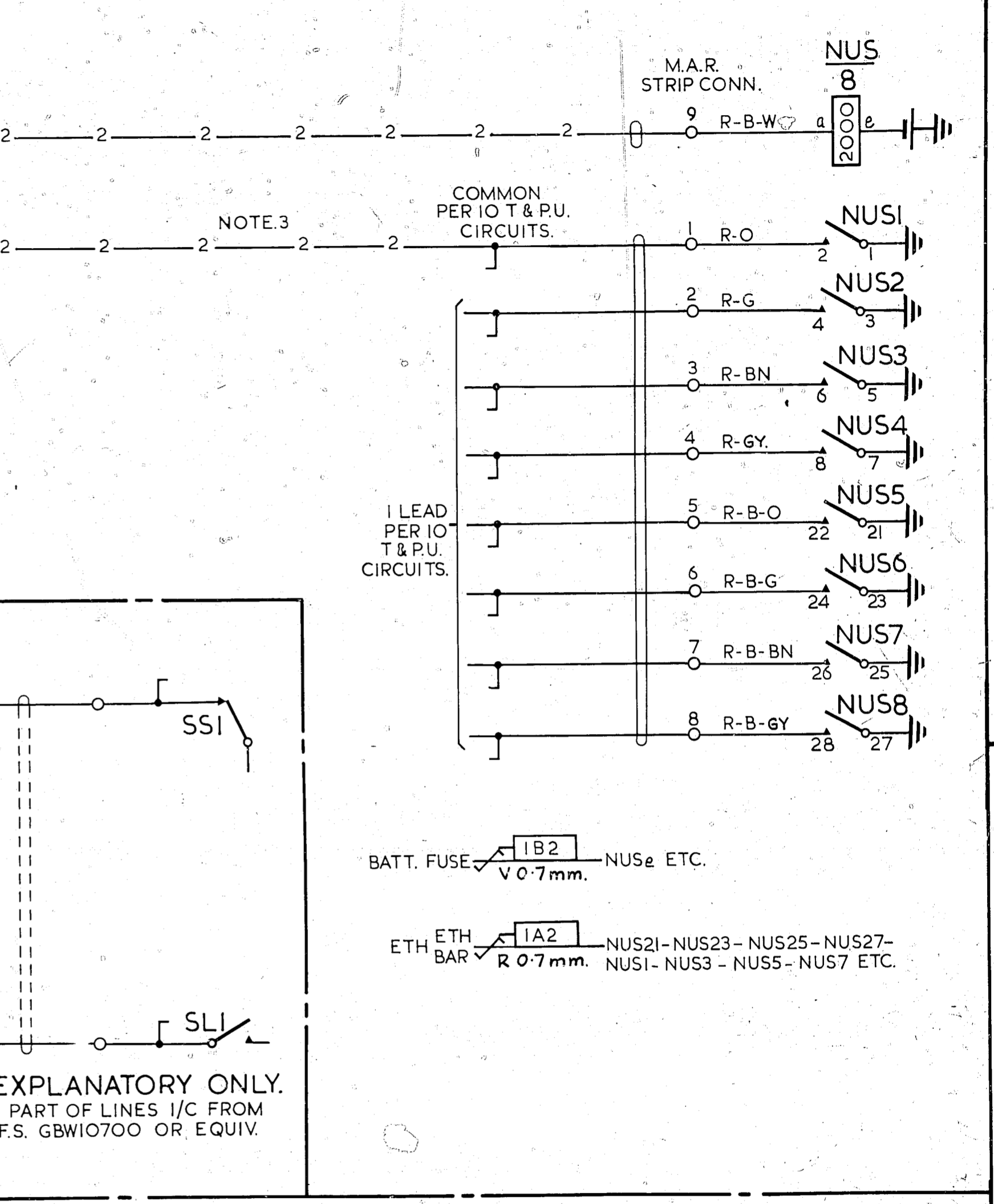


FIG.2. M.A.R. N.U. TONE AUXILIARY SWITCHING RELAY 1 PER 80 T & P.U. CIRCUITS.



DRN	G.E.H.	ENG	
TR		MTH	
CHK	T.G. 3/11	DRFT	
ENG	H.B.	DEPT.	DI47

TERMINAL 12 (FIG.6) & NOTES 10 & 11 ADDED. (39738)	5	19-10-71	B.5-H.
REDRAWN FIG.6 AND NOTES 8 & 9 ADDED	4		
NOTE.7 AND ASSOCIATED TAGS ADDED	3		

TOLERANCES (UNLESS OTHERWISE STATED)	MATERIAL	FINISH	REF.	50v. H
THREE PLACE DEC ⁴ DIMNS				
TWO PLACE DEC ⁴ DIMNS				
FR. ACTIONAL DIMENSIONS				
TITLE TEST DESK OR TEST RACK SWITCHING KEY FOR N.U. TONE.				
SIZE	M	45		