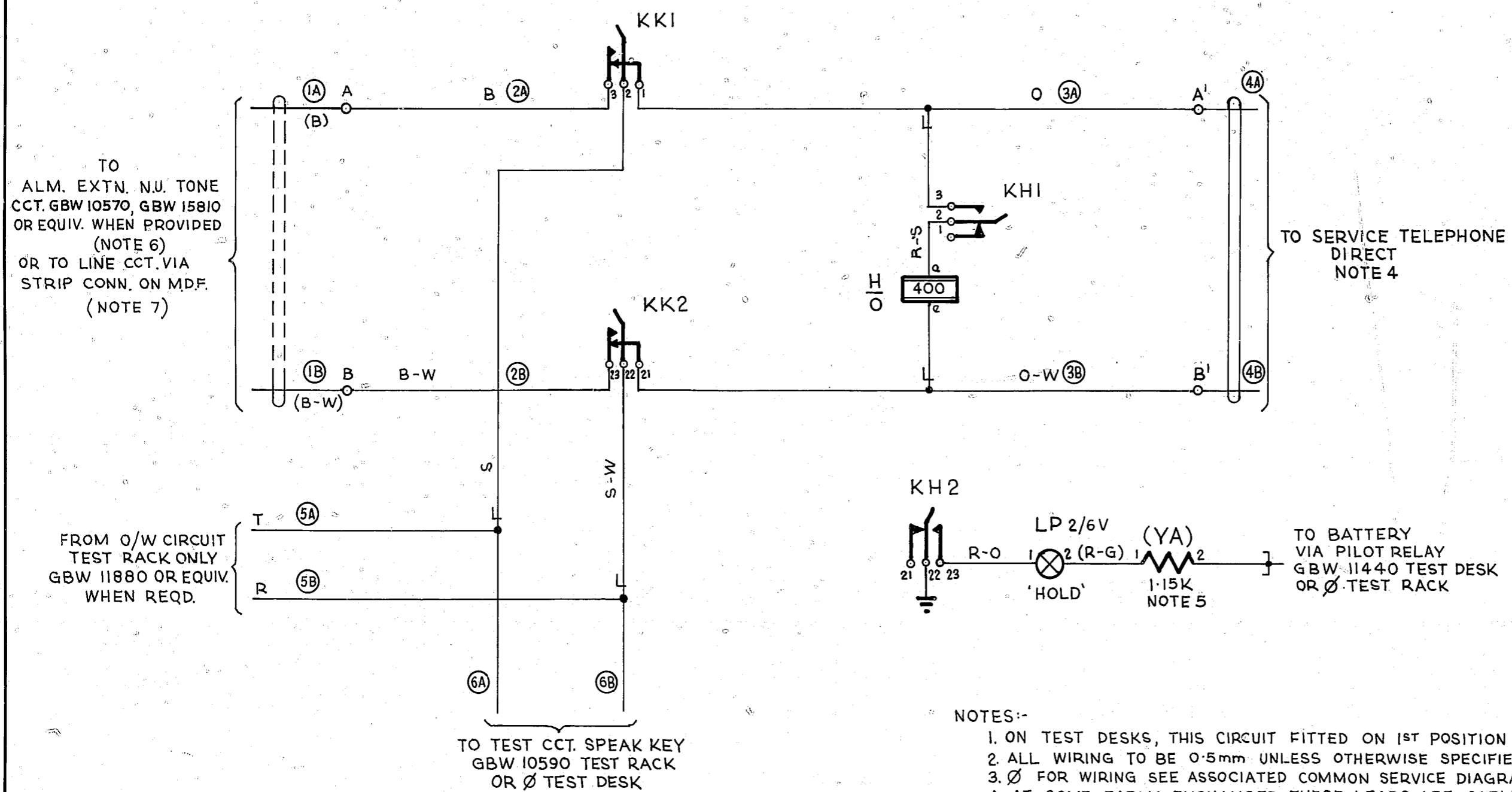


TEST DESK OR TEST RACK



- NOTES:-
1. ON TEST DESKS, THIS CIRCUIT FITTED ON 1ST POSITION ONLY.
 2. ALL WIRING TO BE 0.5mm UNLESS OTHERWISE SPECIFIED.
 3. Ø FOR WIRING SEE ASSOCIATED COMMON SERVICE DIAGRAM.
 4. AT SOME EARLY EXCHANGES THESE LEADS ARE CABLED TO PROTECTORS OR STRIP CONN. ON MDF EITHER DIRECTLY OR VIA IDF. LOCAL
 5. AT SOME EARLY EXCHANGES YA IS 1200 OHMS
 6. AT SOME EARLY EXCHANGES CONNECTIONS TO ALARM EXTENSION CCT. ARE CABLED VIA IDF. LOCAL.
 7. AT SOME EARLY EXCHANGES, CONNECTIONS TO LINE CCT. TERMINATE ON MDF PROTECTORS.

TEST DESK EARTH R. POSN. ETH. 0.7mm KH 22
 TEST RACK EARTH R. Ø.7mm ETH BAR - KH 22

SPEAK(KK)	HOLDING(KH)
2	2

					TEST DESK OR TEST RACK SERVICE TELEPHONE INTERCEPTION CIRCUIT				
RETRACED & METRICATED	157680	8A	5-10-78	RED					
REF. TO TEST DESK MISC. SECTION DELETED	94450	.8	21-5-65	JPL					
AMENDMENT PARTICULARS	ORDER	ISS.	DATE	APP					
					SIZE A3	50V	E		
					GBW 10520				
N.Z.P.O.		DRAWN	CHKD	WIRING	CIRCUIT				