

FIG. 1. EXCH BATT TEST

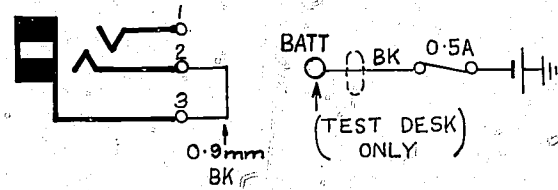


FIG. 2. VOLT METER CONSTANT

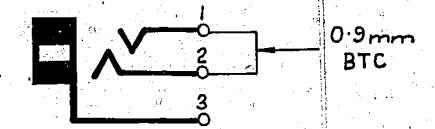
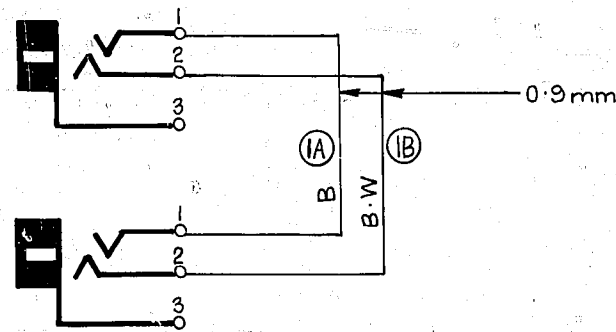


FIG. 3. APPARATUS TEST



NOTE

1. FUSING: - FIG. 1. 0.5A PER JACK.

				TEST DESK OR TEST RACK JACKS FOR V'METER CONSTANT EXCH. BATT & APPARATUS TEST.		
RETRACED AND METRICATED AND AMD. TO NZM SX (157679) (72619)				IA	26-10-78	R.E.D
				I	29-3-49	D.C.K.
AMENDMENT PARTICULARS				ISSUE	DATE	APPD
				SIZE A3 50V E		
NZPO		DRAWN		CHECKED		WIRING CIRCUIT
				GBW 10500		