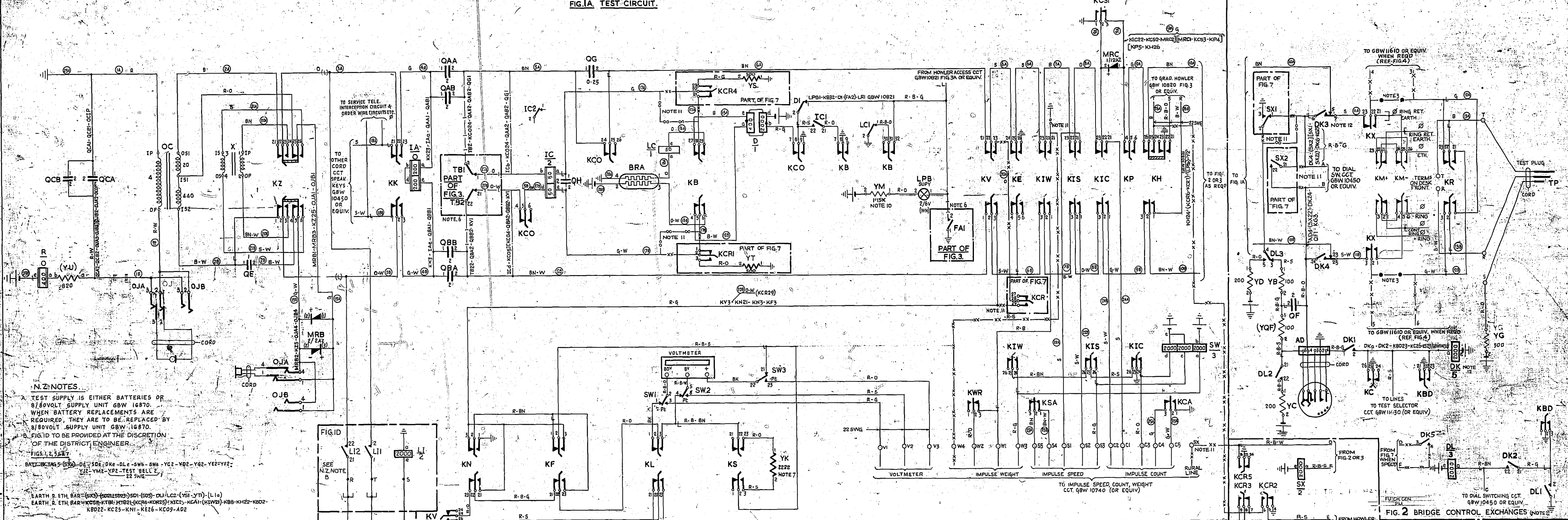
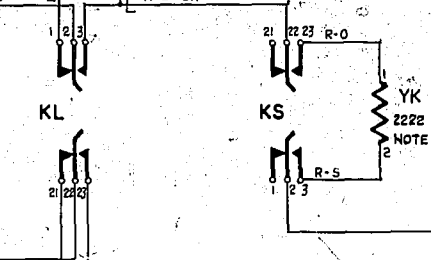
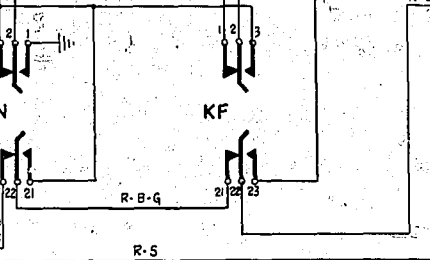
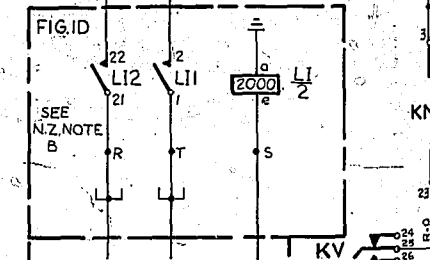


FIG. 1A TEST-CIRCUIT.



N.Z. NOTES

- 1. TEST SUPPLY IS EITHER BATTERIES OR 8/80VOLT SUPPLY UNIT GBW 16870. WHEN BATTERY REPLACEMENTS ARE REQUIRED, THEY ARE TO BE REPLACED BY 8/80VOLT SUPPLY UNIT GBW 16870.
2. FIG. 1D TO BE PROVIDED AT THE DISCRETION OF THE DISTRICT ENGINEER.
3. BATT. BK TAG 5 (5A) - D4 - 5D6 - D46 - DL - 5W - SW - YC2 - YD2 - YE2 - YF2 - YG2 - YH2 - YJ2 - YK2 - YL2 - YM2 - YN2 - YP2 - YQ2 - YR2 - YS2 - YT2 - YU2 - YV2 - YW2 - YX2 - YZ2 - 22 SWG.



- 12. AT SOME EARLY EXCHANGES WITHOUT RURAL LINE TEST FACILITIES, CONTACT DK5 FIG 2 OR DK6 FIG 3 WAS NOT PROVIDED IN WHICH CASE CONTACT DK3 FIG 2 SPRING NO'S ARE 3, 4, 5 OR DK5 FIG 3 SPRING NO'S ARE 2, 3, 4, 5.
1. FUSING 1.5A PER TEST CORD CCT. 1.5A TELEPHONE CCT. POSITIVE BATTERY 0.5A PER 5 CIRCUITS.
2. FOR BRIDGE CONTROL EXCHANGES AND FOR EXCHANGES HAVING NO MANUAL BOARD USE FIGS. 1, 2, 5, 6. FOR SLEEVE CONTROL EXCHANGES USE FIGS. 1, 3, 5, 6.
3. WHEN TEST PANEL FIG. 4 IS REQUIRED DELETE CONNS SHOWN THIS AND ADD CONNS SHOWN THIS IN FIGS. 2 OR 3. FIG. 4 IS NOT TO BE PROVIDED FOR NEW WORK.
4. SUPPLEMENTARY LAMPS WILL BE PROVIDED NEAR THE M.D.F.
5. FOR WIRING OF LEADS SHOWN THIS SEE GBW 11480 (TEST DESK) OR GBW 10870 (MDF) OR EQUIV.
6. AT SLEEVE CONTROL EXCH'G INSERT CONNECTIONS SHOWN - I - AND DELETE CONNECTIONS SHOWN IN FIGS. 1A, 3.
7. AT SOME EARLY EXCHANGES THIS RESISTANCE COMPRISES TWO 110 OHMS RESISTORS - YK - AND VL CONNECTED IN SERIES.
8. ALL WIRING NOT OTHERWISE SPECIFIED TO BE 25 SWG.

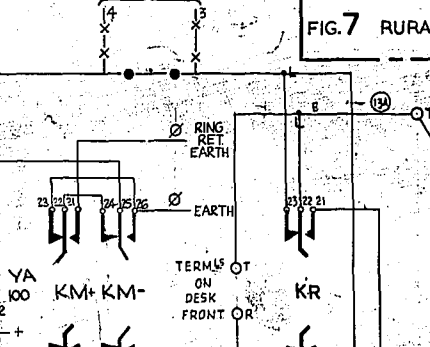
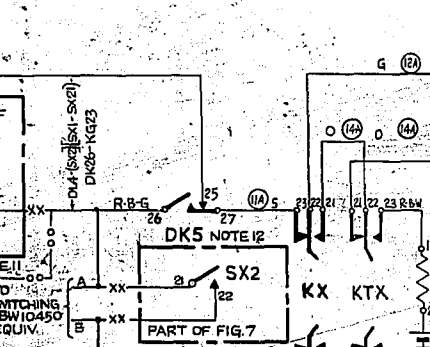
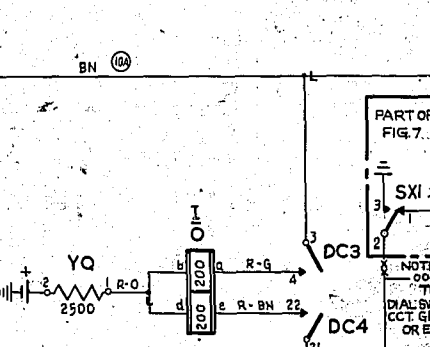
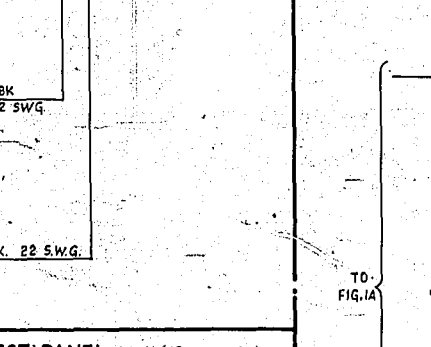
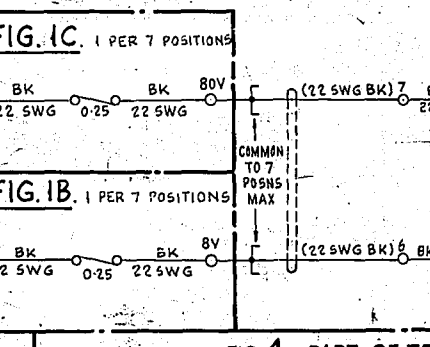
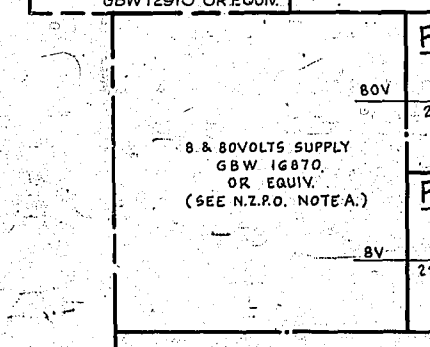


Table with columns for various test functions: SPEED ADJUST (KSN), BATT. DIAL (KBD), TEST BELL (KX), COUNT ADJUST (KCA), TRANS CUT OFF (KZ), HOWLER (KH) + BATT FEED (KB), WEIGHT RESET (KWR), VOLTMETER (KV) BY SCALE (KL), SLEEVE CONTROL TEST EXT. (KTX), SPEAK (KK), RING (KO) + DIAL (K), RECEIVE NEG. (KN), EARTHING (K), SUBS BATT & HOLD CUT OFF (KCO), LINE REV. (KR), X PARTY (KP), CALL SHARED SERVICE (KCS), VOLTMETER REV. (K), VOLTMETER SHUNT (KS), IMPULSE WEIGHT (KIW), IMPULSE SPEED (KIS), IMPULSE COUNT (KIC), CALL RURAL PARTY (KCR).

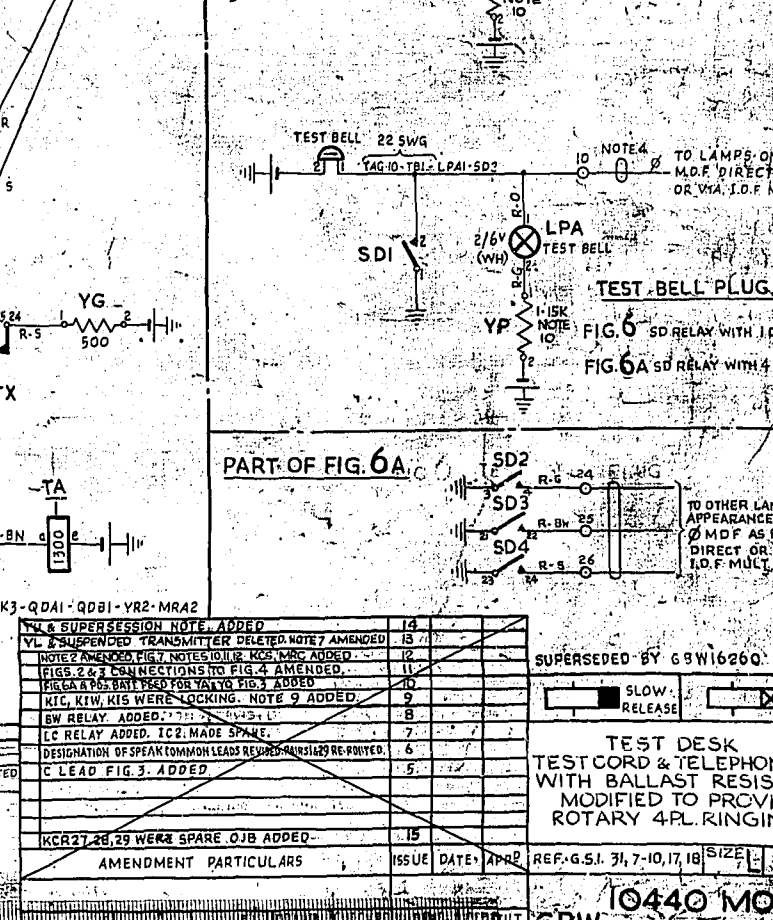
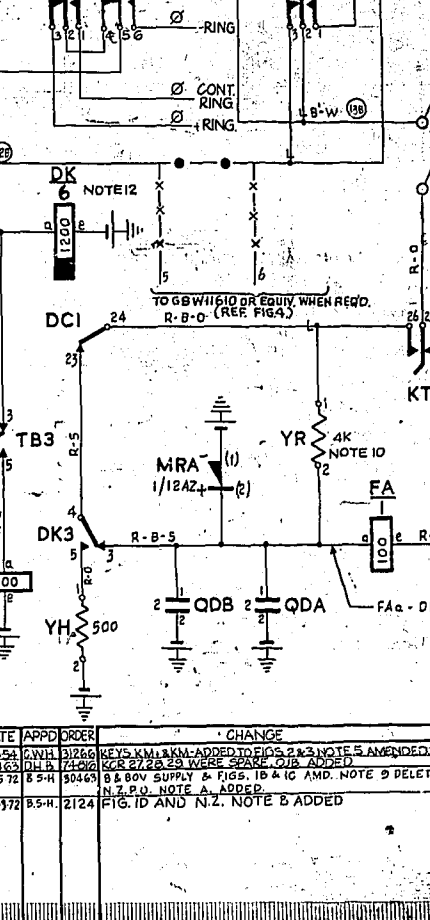
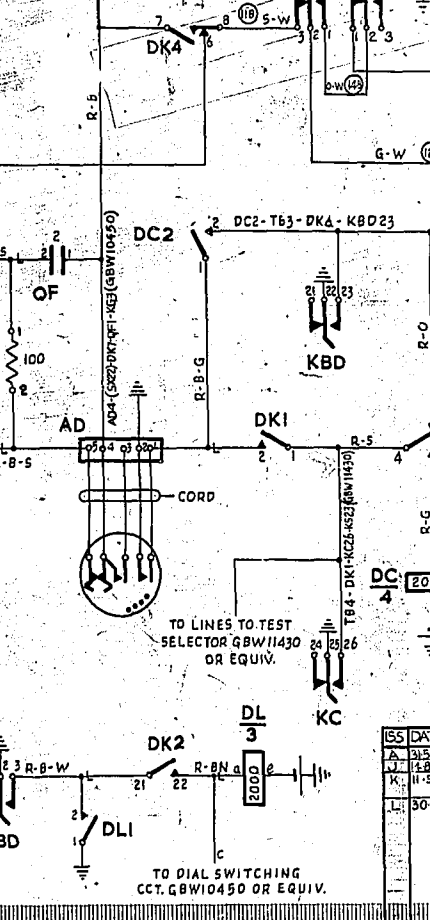
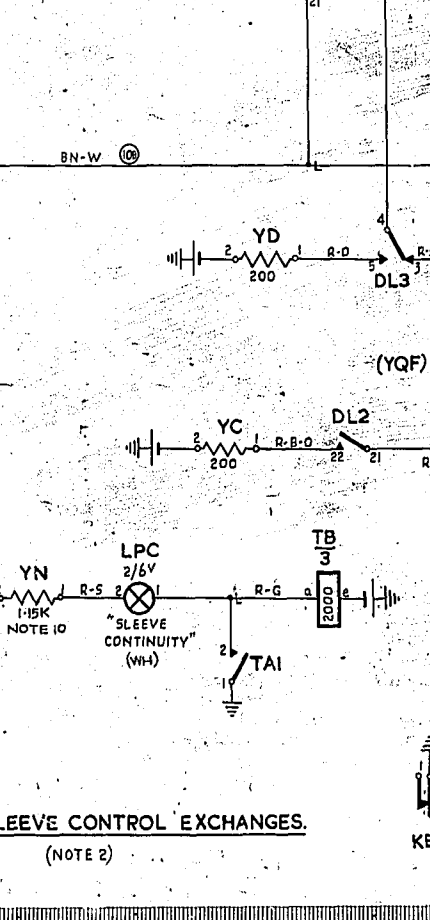
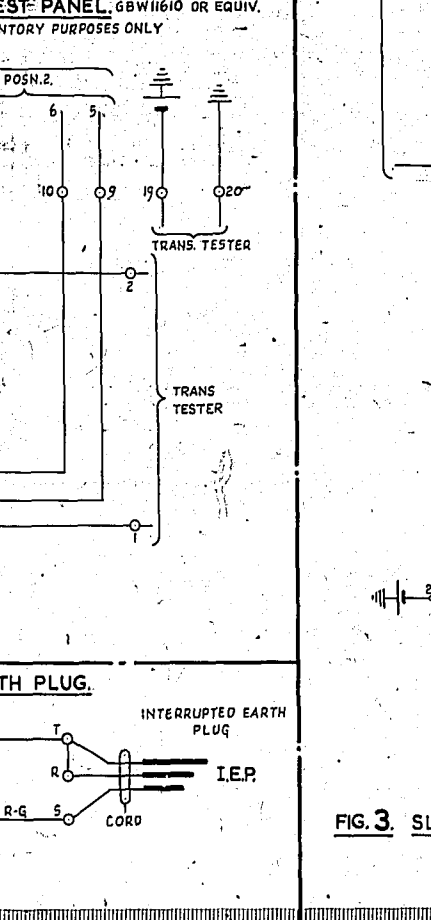
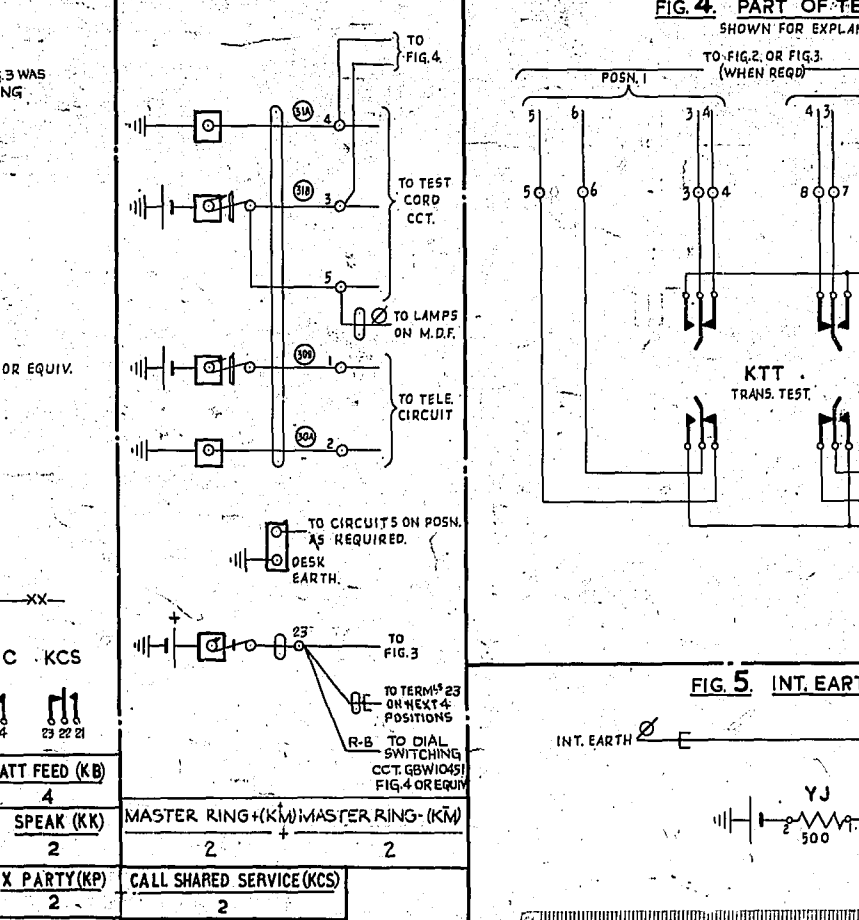


Table with columns for DATE, APPROVED, CHANGE, and AMENDMENT PARTICULARS. Includes a section for SUPERSEDED BY GBW 16260 and TEST DESK WITH BALLAST RESISTANCE MODIFIED TO PROVIDE DIRECT OR VIA I.D.F. MULT. ROTARY 4PL. RINGING.