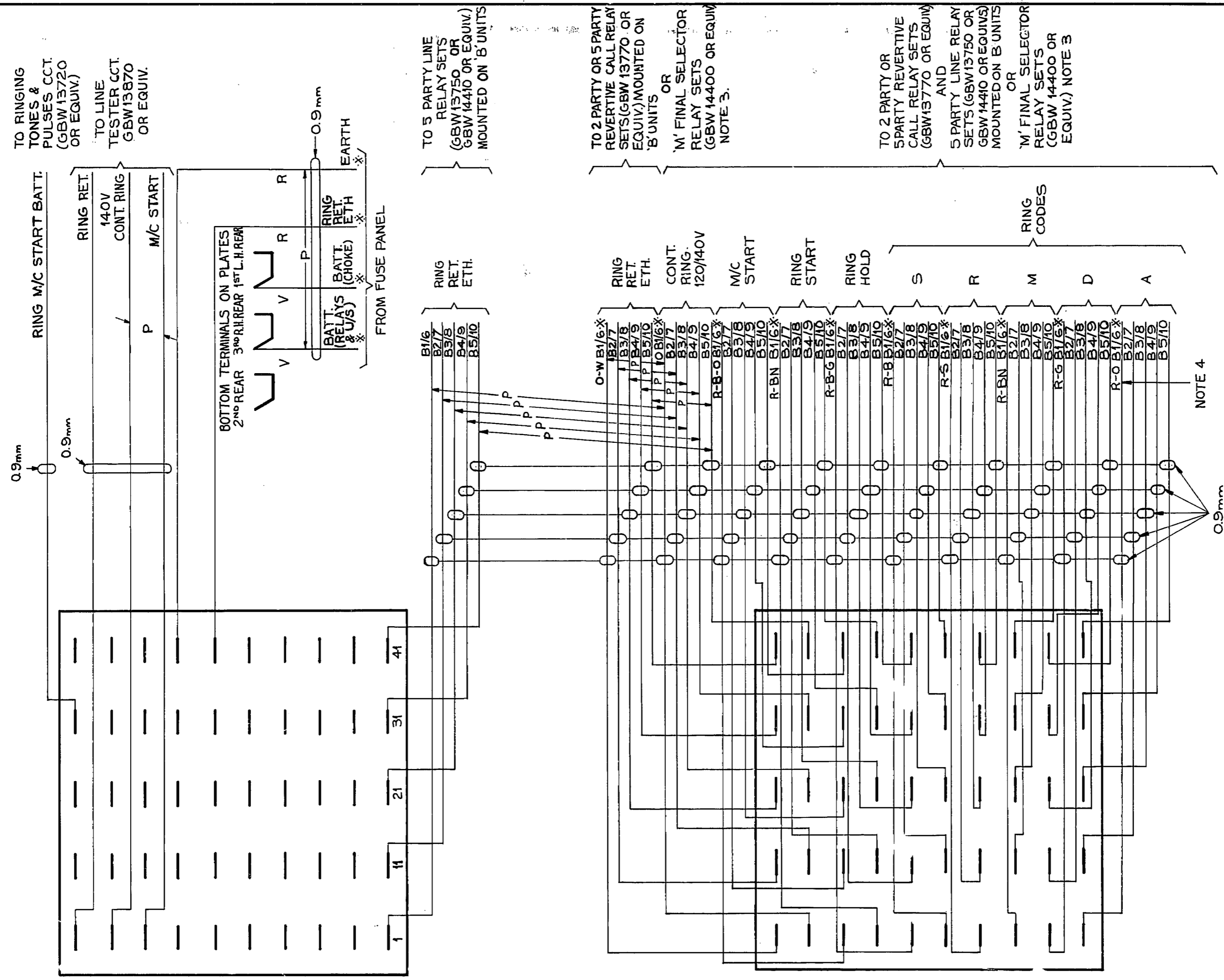


0 5 Centimetres 10 15 20 25 30



TO RINGING TONES & PULSES CCT. (GBW13720 OR EQUIV.)

TO LINE TESTER CCT. (GBW13870 OR EQUIV.)

TO 5 PARTY LINE RELAY SETS (GBW13750 OR GBW14410 OR EQUIV.) MOUNTED ON 'B' UNITS

TO 2 PARTY OR 5 PARTY REVERTIVE CALL RELAY SETS (GBW13770 OR EQUIV.) MOUNTED ON 'B' UNITS OR 'M' FINAL SELECTOR RELAY SETS (GBW14400 OR EQUIV.) NOTE 3.

TO 2 PARTY OR 5 PARTY REVERTIVE CALL RELAY SETS (GBW13770 OR EQUIV.) AND 5 PARTY LINE RELAY SETS (GBW13750 OR GBW14410 OR EQUIV.) MOUNTED ON 'B' UNITS OR 'M' FINAL SELECTOR RELAY SETS (GBW14400 OR EQUIV.) NOTE 3

NOTES:

1. ALL WIRING TO BE 0.7mm UNLESS OTHERWISE SPECIFIED.
2. SCA INDICATES UPPER STRIP CONN.
3. SCB INDICATES LOWER STRIP CONN.
4. WHEN USED WITH 'M' FINAL SELECTOR CCT. GBW14400 ONLY WIRES MARKED THUS 'X' TO BE CABLED.
5. COLOURS ONLY APPLY WHEN 'M' UNITS ARE WIRED USING LOCAL CABLE FORMS. ON EARLY EQUIPMENT COLOUR OF BATT. WIRING WAS BK.

RETRACED (157651) 11A B-6-78 RED		U.A.X.N.Z. 13	
NOTE 5 ADDED (3436) 11 22-3-72 BSH		RINGING CODES	
AMENDMENT PARTICULARS		ISS	DATE
N.Z.P.O.		APPD	
		GBU 13760 13762	
		13761	