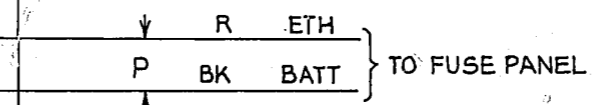
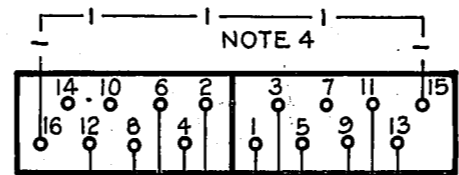
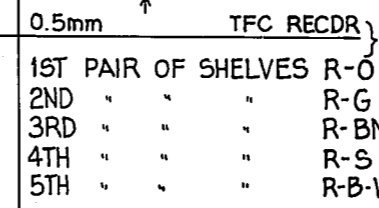


AS SEEN FROM REAR

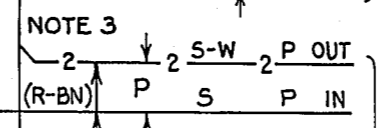


TO FUSE PANEL



TO TRAFFIC RECORDER STRIP CONN. WHEN REQD

FROM GROUP SELR. LEVELS VIA T.D.F. O/G OR I.D.F. MULT. OR LOCAL



TO ROUTINER ACC. SELECTOR GBW.12530 OR EQUIV. NOTE 3

OR TO GROUP SELECTOR VIA I.D.F. LOCAL OR MULT. OR TO O/G JCN R/S VIA I.D.F. LOCAL.

TO JUNC VIA I.D.F. LOCAL (WHEN REQ'D) & M.D.F.

TO T.J.F. (WHEN REQ'D) VIA I.D.F. LOCAL (WHEN REQ'D)

NOTES


1. SHELF JACK U POINTS 9 & 11 MAKE CONTACT WHEN RELAY SET IS REMOVED
2. ALL WIRING 0.7mm UNLESS OTHERWISE SPECIFIED
3. WHEN ROUTINER ACCESS SELECTOR IS TO GBW 11551 P OUT (U13) IS NOT WIRED & THE 'P' IN LEAD (U9) IS IN R-BN & THE RT LEAD (U8) IS WIRED TO HA TERMINATION ON ACCESS.
4. WHEN JUNCTION RESISTANCE IS LESS THAN 200 Ω REMOVE STRAP BETWEEN U15 & U16.

PROOF

50V W

ISS	DATE	DEL	DC	ORDER	CKD	APD	CHANGE	ISS	DATE	DEL	DC	ORDER	CKD	APD	CHANGE
								6	6.6.58			77664		A.S	NOTE 3 DELETED.
								5	6.6.58			77663		A.S	NOTE 3 REVISED
								4	5.11.57			8239		A.S	TFC RECORDER SHELF LEADS AMD. STRAP BETWEEN U15-U16, NOTE 4 ADDED
								3	2.5.57			68783		C.H	TFC RECORDER LEADS & REF TO O/G JCN. R/S ADDED NOTE 3 & REFS. ADDED NOTE 2 AMD.
								2	18.5.55			42410		C.H	SUPPLY. ALM. U10 AND POS. BATT. U15 LEADS DELETED.
								1	4.5.54	EG		31953		C.H	

AUTO TO AUTO R/S WITH FORWARD HOLDING FOR USE ON TOLL SELR. LEVELS 2000 TYPE

DRN: T-EQPT CKD ORIGIN: T-EQPT
 TCD: M.K APPD STANDARD: ATW 22001
 NZPO ENGINEER-IN-CHIEF, WELLINGTON
 SHT 1 OF 1
 SIZE A3 **GBU 12550**

UD 235