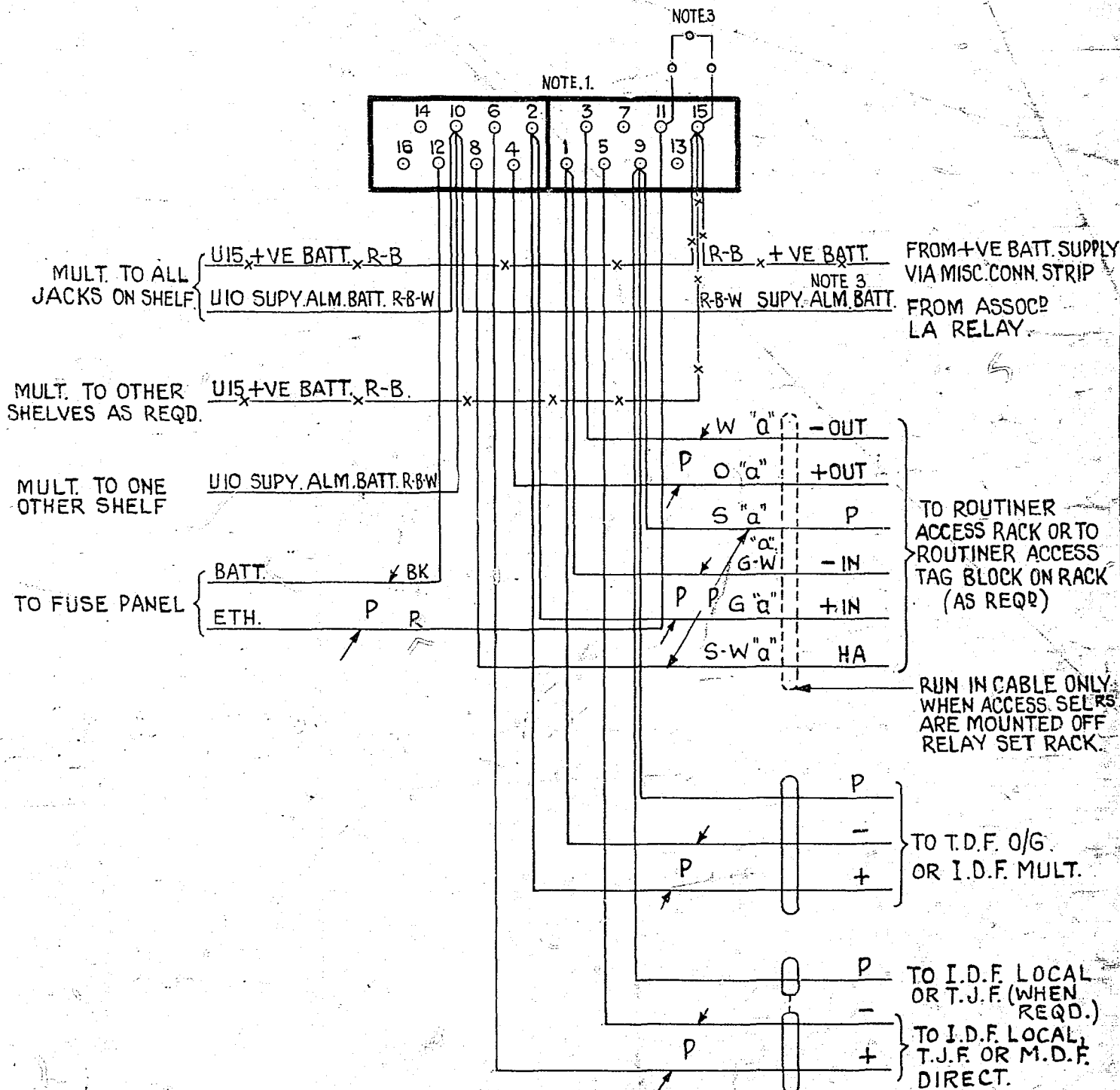


AS SEEN FROM REAR



NOTES

1. JACK POINTS 9 & 11 TO MAKE CONTACT WHEN RELAY SET IS REMOVED.
2. ALL WIRE, UNLESS OTHERWISE STATED TO BE 20 S.W.G. WIRE MARKED "α" TO BE 25 S.W.G.
3. WHEN METERING IS NOT REQUIRED DISCONNECT POS. BATT. WIRING & STRAP U15-U11. SHOWN. —○—○—○—○—

<b>AUTO. TO AUTO. RELAY SET WITH REPEATING COIL BRIDGE AND HIGH SPEED IMPULSING RELAYS 2000 TYPE.</b>					
REF TO GBU 11 111 ADDED	(72921)	3	22.5.64	DBX	
NOTE 3 ADDED	(32185)	2	9.5.55	CLM	
	(31481)	1	31481	CLM	
AMENDMENT PARTICULARS		ISSUE	DATE	APP'D	50V G
N.Z.P.O.					
<b>GBU 11 111</b>					