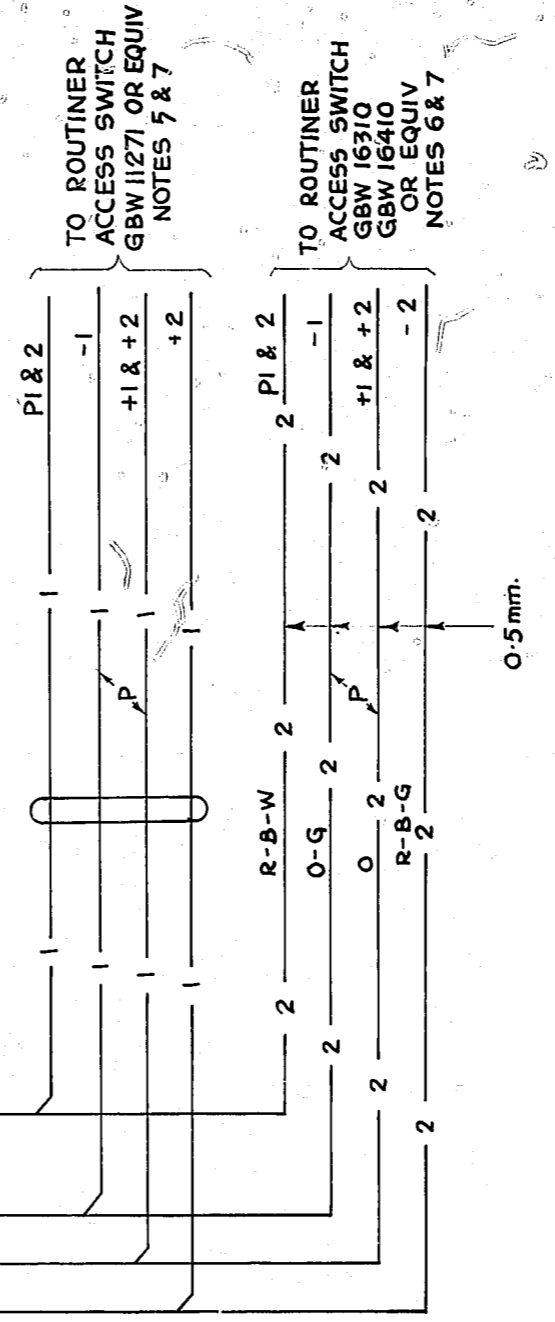
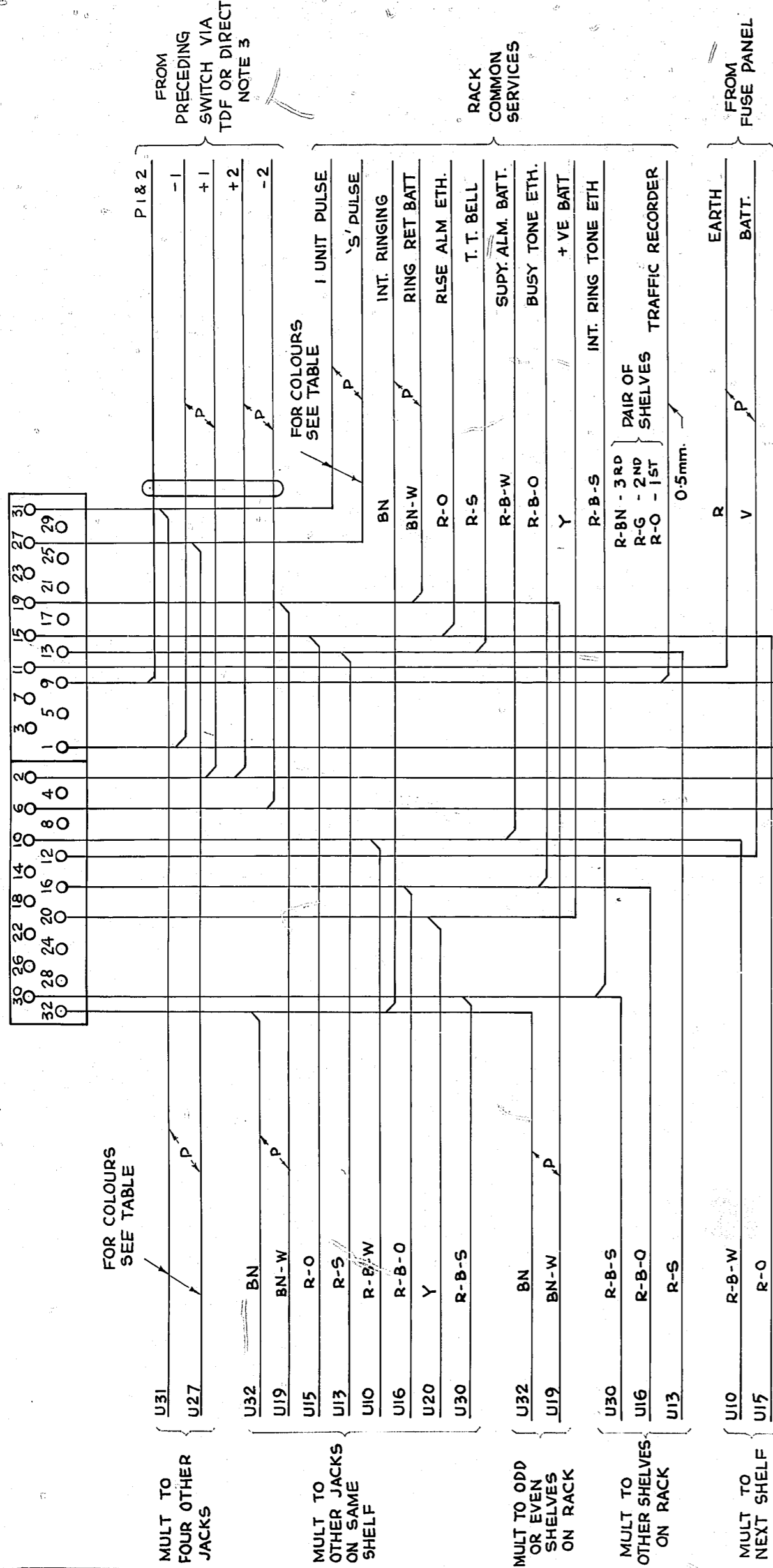


# AS SEEN FROM REAR

NOTES 1 & 3



## NOTES:-

1. SHELF JACK U-POINTS 9 & 11 MAKE CONTACT WHEN SELECTOR IS REMOVED EXCEPT WHERE GBW 14850 NOTE 2.9 APPLIES
2. ALL WIRING TO BE 0.7mm. UNLESS OTHERWISE SPECIFIED
3. WHEN OUTLETS FROM GROUP SELECTORS ARE CABLED DIRECT THE FOLLOWING STRAPS MUST BE APPLIED ON SITE:-  
 a) IN ALL CASES STRAP U11 TO U7  
 b) WHEN NO SELECTOR IS EQUIPPED STRAP U9 TO U7 EXCEPT WHERE GBW 14850 NOTE 2.9 APPLIES
4. ON COMPOSITE U/S & F/S R/S RACKS USE DISTRIBUTION FOR SHELVES E&F
5. USE CONNS -1-1- WHEN ACCESS SELECTOR TO GBW 11271 OR EQUIV, IS SPECIFIED
6. USE CONNS -2-2- WHEN ACCESS SELECTOR TO GBW 16310 OR GBW 16410 OR EQUIV. IS EQUIPPED ON "STANDARD" OR "COMPOSITE" U/S & F/S RACKS RESPECTIVELY
7. ON COMPOSITE U/S & F/S RACKS WHICH ARE USED IN EXCHANGES ALREADY PROVIDED WITH ACCESS SELECTOR TO GBW 11271 OR EQUIV USE CONNS -1-1- IN ADDITION TO CONNS -2-2- REFERRED TO IN NOTE 6, IN WHICH CASE THE UNISELECTOR ACCESS SELR EQUIPPED ON THE RACK IS NOT USED
8. ON SOME EARLY EQUIPMENT -VE BATTERY WIRING IS BK. AND +VE BATTERY WIRING IS R-B

U27	U31	SELECTOR'S
G + G-W	1-5	SHELVES A & D
B + B-W	6-10	" A & D
O + O-W	1-5	" B & E
BN + BN-W	6-10	" B & E
S + S-W	1-5	" C & F
W + R-W	6-10	" C & F

NOTE 4

REDRAWN FROM ISS. 8 & METRICATED (183023)		A	22.11.79	A.P.
BATT WIRING COLOURS CHANGED NOTE 8 ADDED (7580)		B	18-10-68	B.R.
REDRAWN, NOTES 4-7 & ALTERNATIVE ACCESS CONNS ADDED (74734)		7	7-8-63	0-8H
AMENDMENT PARTICULARS	ISSUE	DATE	APP'D	
N.Z.P.O.	DRAWN	CHECKED	WIRED	ENGINEER'S

**200 LINE FINAL SELECTOR  
2-10 PBX  
POSITIVE BATTERY METERING  
2000 TYPE**

**GBU 10790 10792  
10791**

50V E